

MIDLAND AND GREAT WESTERN RAILWAYS.

HOTWELLS TO AVONMOUTH.

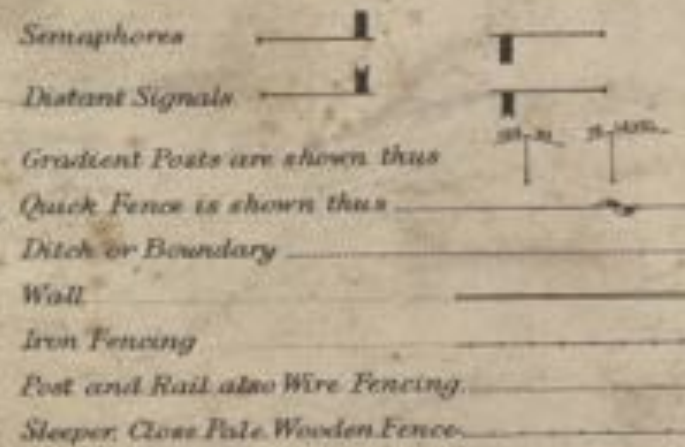
LAND PLAN.

Surveyed by
P. S. McCallum,
 Estate Agent,
 Derby.
 1911.

Titles of Acts.

Reference.

SIGNALS, &c. The Signals are shown as they appear to view.



Bristol Port Railway and Pier	-	-	-	Act 1862—25 & 26 Vict.	Royal Assent 17th July, 1862.
Do.	-	-	-	Consolidating, etc.	Act 1865—28 & 29 Vict. Do. 29th June, 1865.
Great Western & Midland Railway Co.'s (Clifton & Bristol)	-	-	-	Running Powers	Act 1871—34 Vict. Do. 25th May, 1871.
Midland Railway	-	(Additional Powers)	-	Block System	Act 1884—47 & 48 Vict. Do. 3rd July, 1884.
Bristol Port Railway and Pier	-	-	-	Further Money	Act 1888—51 & 52 Vict. Do. 7th Aug., 1888.
Midland Railway	-	(Additional Powers)	-	Vesting in Midland & Great Western Cos.	Act 1890—53 & 54 Vict. Do. 25th July, 1890.
Great Western Railway	-	-	-	Widening	Act 1903—3 Ed. VII. Do. 11th Aug., 1903.

COLORING. The Company's FREEHOLD Property is shown by RED Colour
 Do. LEASEHOLD do. RED EDGE ONLY
 Property owned JOINTLY with other Companies GREEN Colour
 Do. over or through which the Joint Companies have an EASEMENT is shown by GREEN dotted lines.
 Do. over or through which the Company has granted an EASEMENT is shown by PURPLE dotted lines.
 Do. granted on LEASE by the Company by RED Full lines.
 Do. SOLD or otherwise disposed of by the Company is shown by PURPLE colour.
 MINERALS specially purchased by the Company shown by BLUE Full lines.
 Do. SOLD or otherwise disposed of by the Company shown by PURPLE Full lines.

NOTE. Vendors Names are written in block as VENDOR.
 The figures within the circle after the names of the Vendors refer to the number on the deeds relating to the purchase &c.
 The slanting figures as 20 refer to Parliamentary numbers (Original Act) Do. within a triangle as 40 are the Parliamentary numbers referring to subsequent Acts.

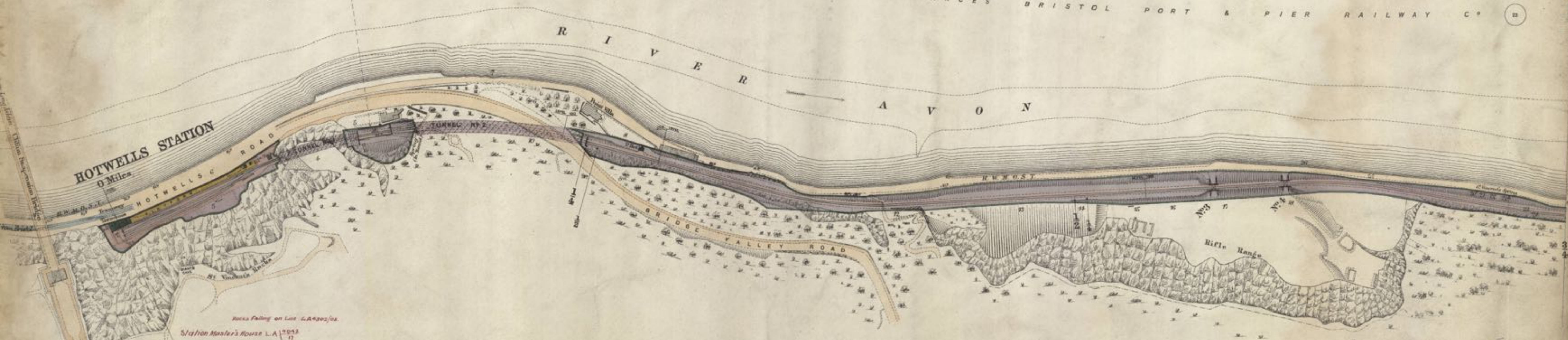
COUNTY OF GLOUCESTER

CITY & COUNTY BOROUGH OF BRISTOL

(FORMERLY PARISH OF CLIFTON)



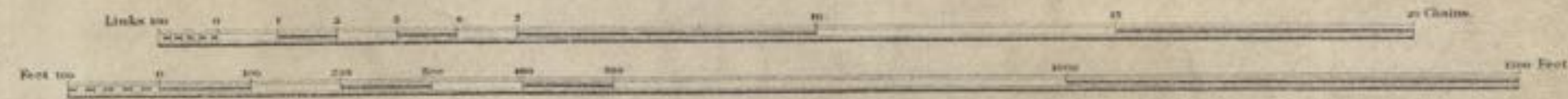
THE
 MESSRS NELSON & BEALE'S STATEMENT
 CORPORATION OF BRISTOL
 UNCOMPLETED
 CONVEYANCES BRISTOL PORT & PIER RAILWAY CO



SOCIETY OF MERCHANT VENTURERS OF BRISTOL

THE CORPORATION OF BRISTOL

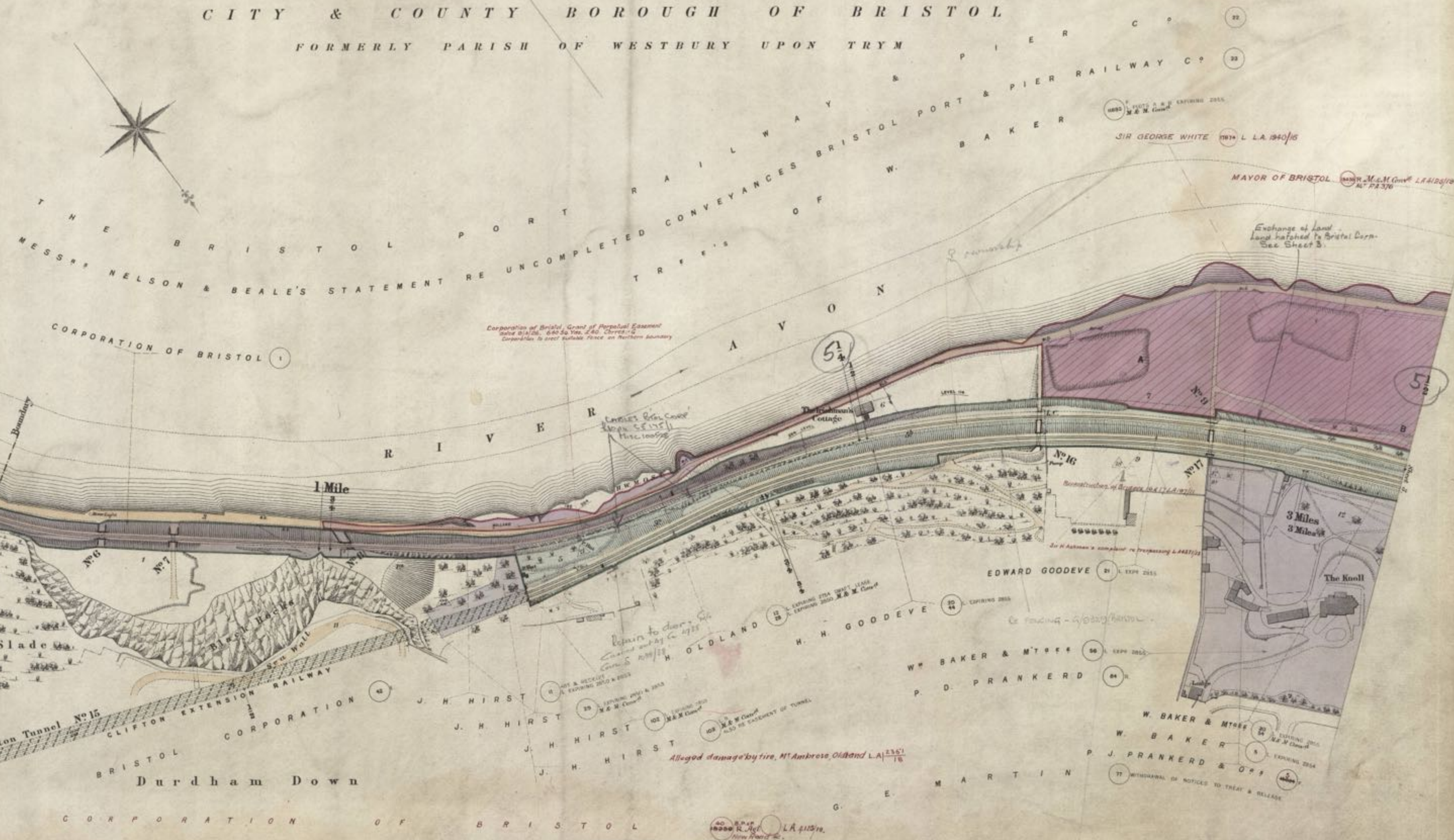
Scale, 2 Chains to an Inch.



COUNTY OF GLOUCESTER

CITY & COUNTY BOROUGH OF BRISTOL

FORMERLY PARISH OF WESTBURY UPON TRYM



MESSRS NELSON & BEALE'S STATEMENT RE UNCOMPLETED TRAFFIC

CORPORATION OF BRISTOL

Corporation of Bristol Grant of Perpetual Easement
Date 31/12/86. 640 Sq Yds. 240 Chres. - 2
Corporation to erect Suitable Fence on Northern Boundary

FORMERLY
PARISH OF CLIFTON

Walcomb Slade

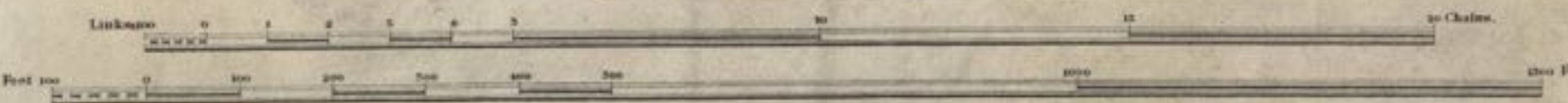
Clifton Tunnel No 15

BRISTOL CORPORATION

Durdham Down

THE CORPORATION OF BRISTOL

Scale, 2 Chains to an Inch.



Land of Bristol Corporation
by G.C. Rose 1880 G.L. 176

Estate Agents Office
Midland Railway
Derby.

COUNTY OF GLOUCESTER

CITY & COUNTY BOROUGH OF BRISTOL

FORMERLY PARISH OF WESTBURY UPON TRYM

FORMERLY PARISH OF HENBURY

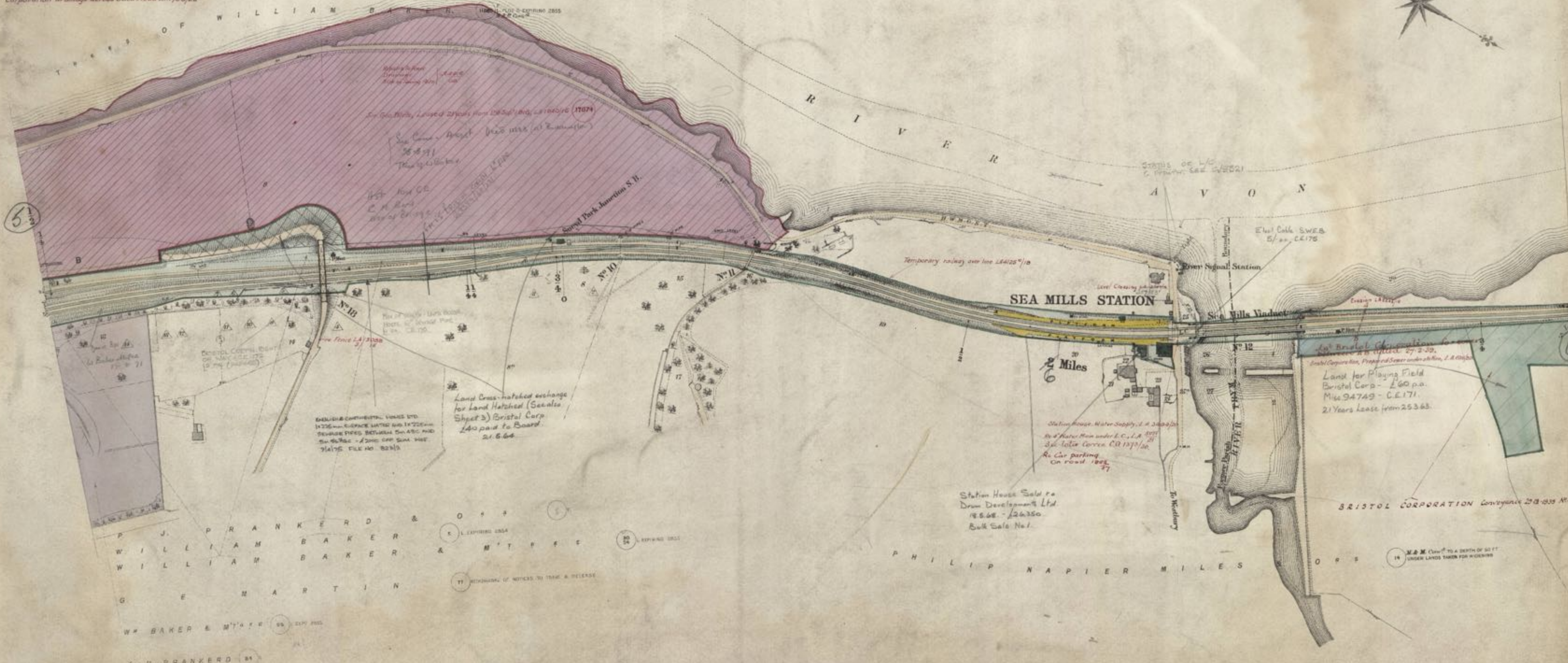
MAYOR OF BRISTOL
THE BRISTOL

M.E.M. Cont^d L. 4188/99
No. 238

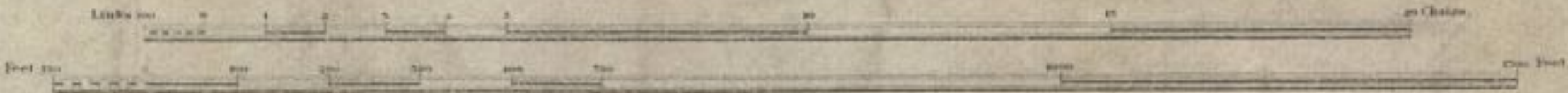
PORT RAILWAY & PIER CO

MESSRS NELSON & BEALE'S STATEMENT RE UNCOMPLETED CONVEYANCES BRISTOL PORT & PIER RAILWAY

Corporation drainage across Cold Mead L. 1753/22



Scale, 2 Chains to an Inch.



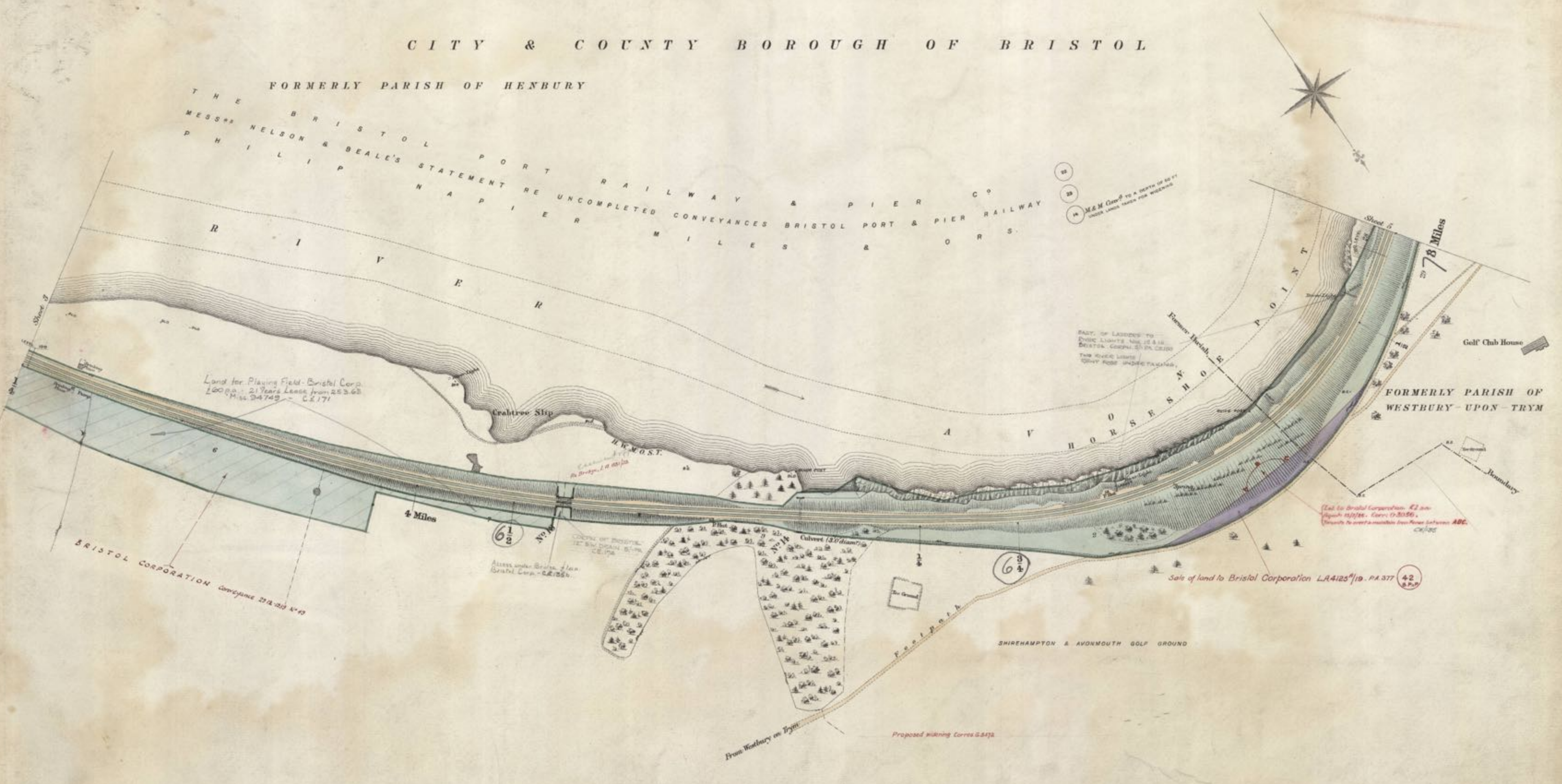
Estate Agents Office
Midland Railway
Derby.

COUNTY OF GLOUCESTER

CITY & COUNTY BOROUGH OF BRISTOL

FORMERLY PARISH OF HENBURY

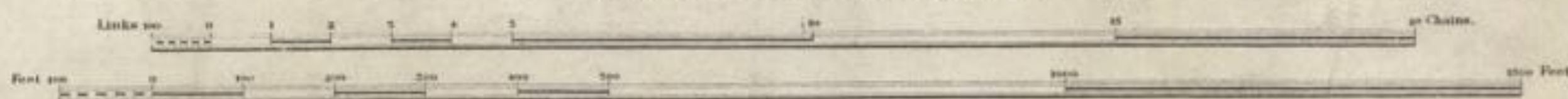
THE BRISTOL PORT RAILWAY & PIER CO
MESSRS NELSON & BEALE'S STATEMENT RE UNCOMPLETED CONVEYANCES BRISTOL PORT & PIER RAILWAY
PHILIP HANAPIER MILES & ORS.



Let to Bristol Corporation £2 per
Acre 15/1/86. Corrs G.5056.
Through to street a mainline from River to Avenue ABC.
C.1888

Sals of land to Bristol Corporation L.A.4125/19. PA.377 42
G.P.M.

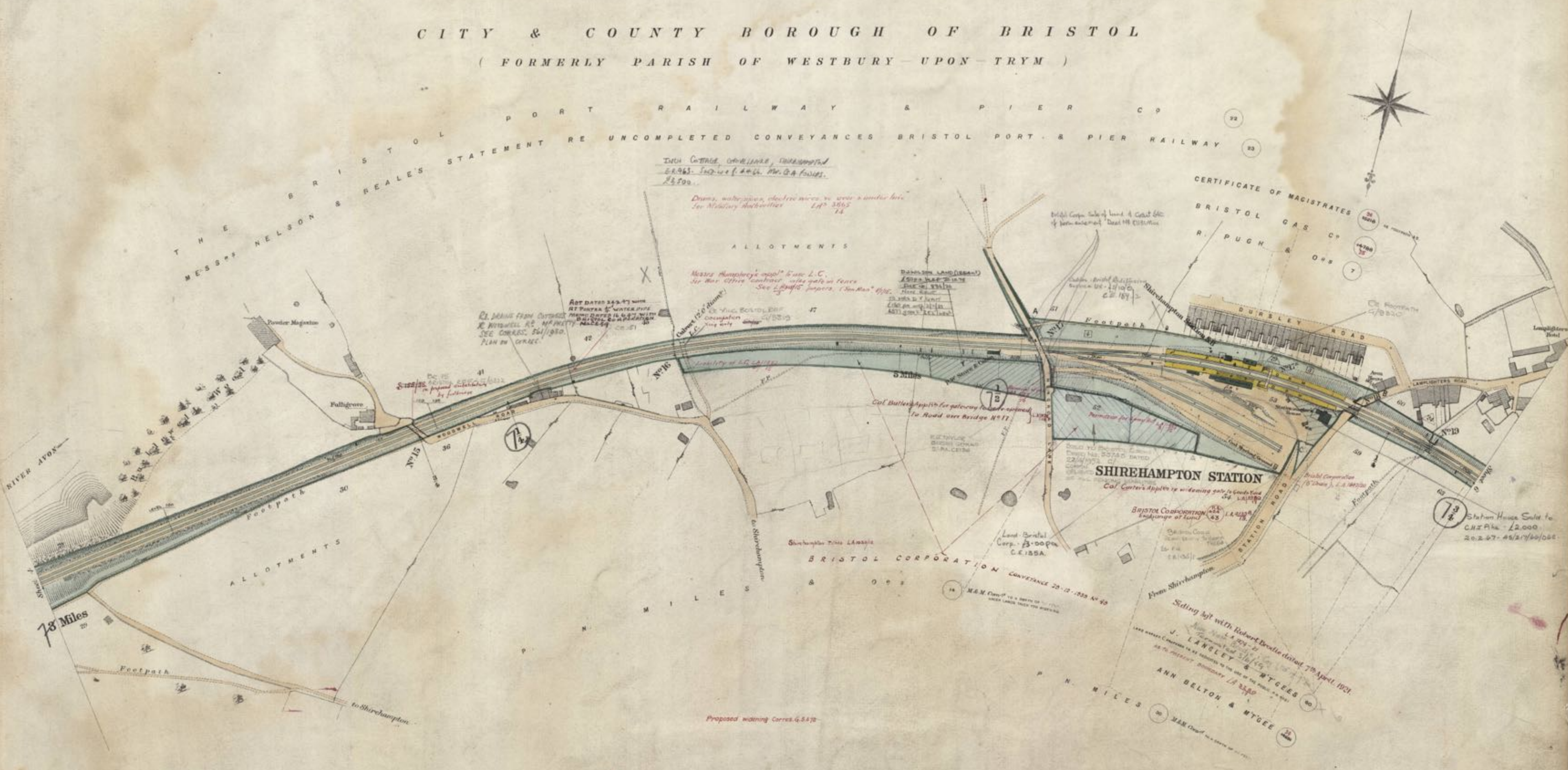
Scale, 2 Chains to an Inch.



COUNTY OF GLOUCESTER

CITY & COUNTY BOROUGH OF BRISTOL
(FORMERLY PARISH OF WESTBURY-UPON-TRYM)

STATEMENT RE UNCOMPLETED CONVEYANCES BRISTOL PORT & PIER RAILWAY



Scale, 2 Chains to an Inch.



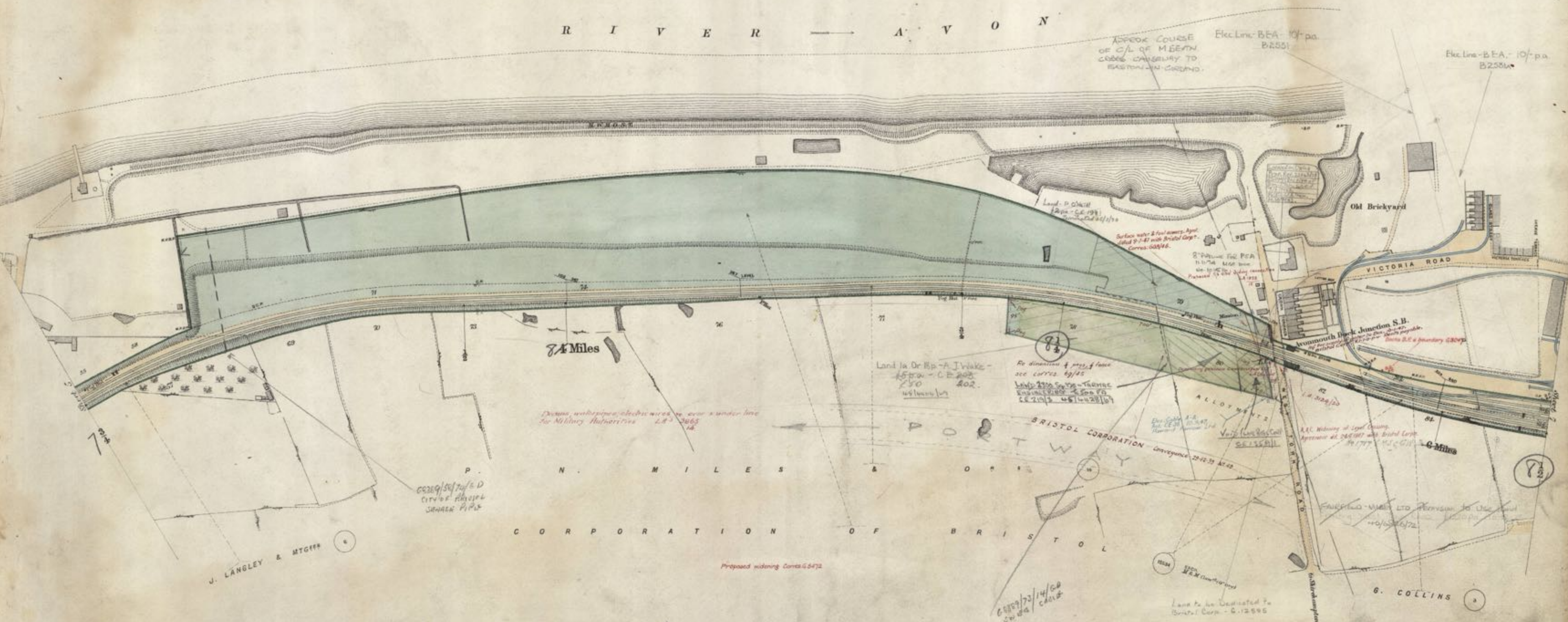
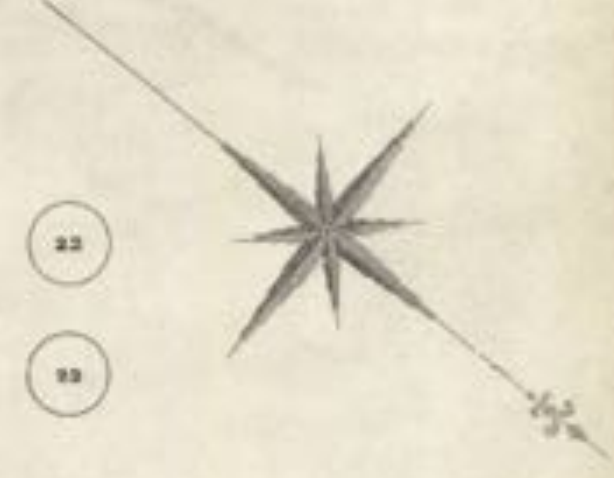
COUNTY OF GLOUCESTER

CITY & COUNTY BOROUGH OF BRISTOL

FORMERLY PARISH OF WESTBURY UPON TRYM)

T H E B R I S T O L P O R T R A I L W A Y & P I E R C O R P O R A T I O N
M E S S R S N E L S O N & B E A L E ' S S T A T E M E N T R E U N C O M P L E T E D C O N V E Y A N C E S B R I S T O L P O R T & P I E R R A I L W A Y

R I V E R A V O N

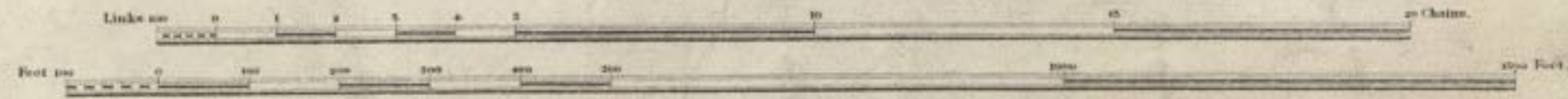


8 1/2 Miles

N. M I L E S & C O ' S

C O R P O R A T I O N O F B R I S T O L

Scale, 2 Chains to an Inch.

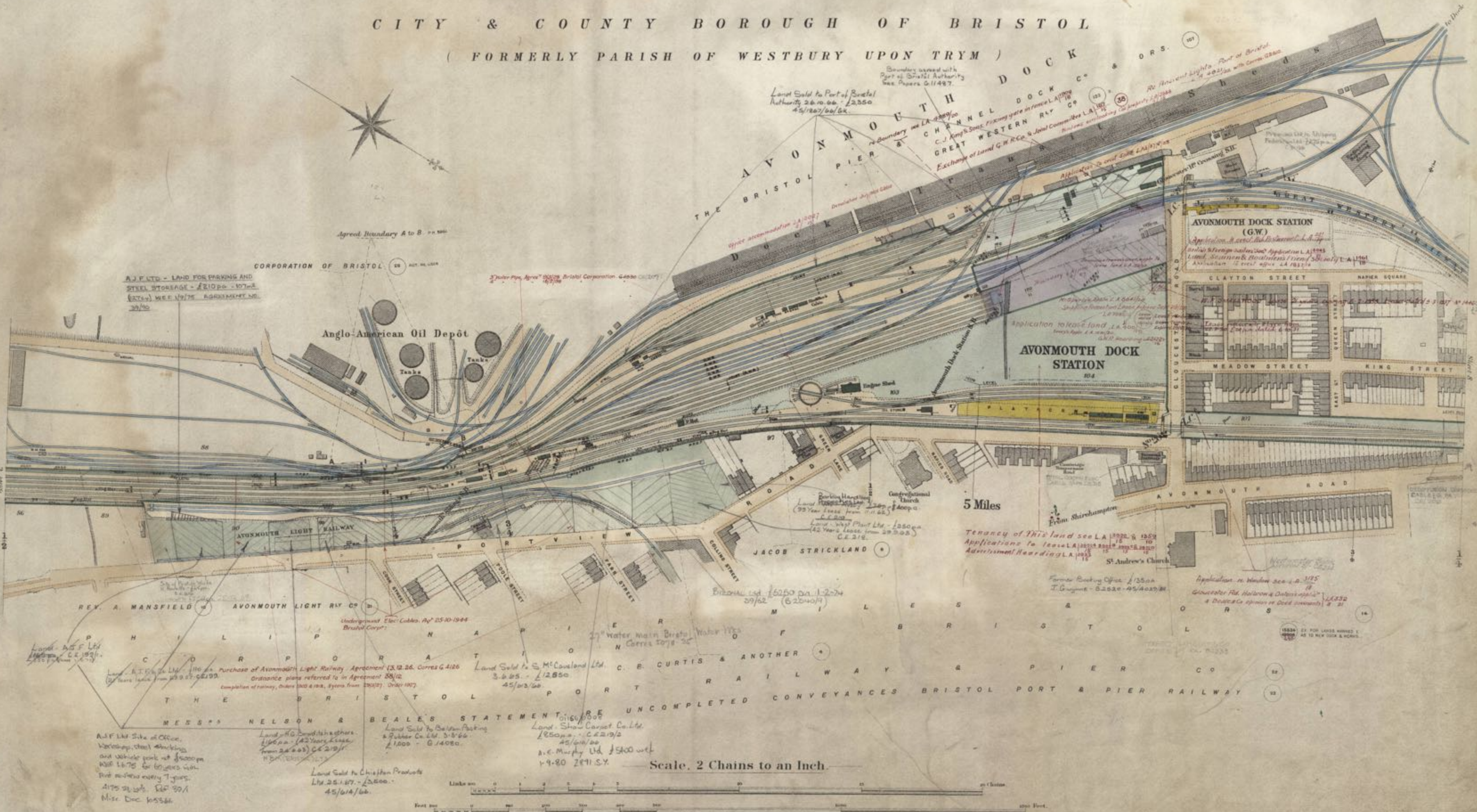


Estate Agents Office,
Midland Railway,
Derby.

COUNTY OF GLOUCESTER

CITY & COUNTY BOROUGH OF BRISTOL

(FORMERLY PARISH OF WESTBURY UPON TRYM)



A.J.F. LTD - LAND FOR PARKING AND STEEL STORAGE - 2100 sq. ft. (SITING) SEE 1977 AGREEMENT NO. 20/40

Anglo-American Oil Depot

AVONMOUTH DOCK STATION

AVONMOUTH DOCK STATION (G.W.)

5 Miles

Scale, 2 Chains to an Inch.

Estate Agents Office, Midland Railway, Derby.

COUNTY OF GLOUCESTER

CITY & COUNTY BOROUGH OF BRISTOL

(FORMERLY PARISH OF WESTBURY UPON-TRYM)

DUKE OF BEAUFORT, MIDLAND & GWR RLY C^o (Jointly)
GREAT WESTERN RLY C^o & CORPORATION OF BRISTOL

HON. C. A. GORE, A COMMISSIONER OF
H. M. WOODS, FORESTS & LAND REVENUES



ROYAL EDWARD DOCK

TIMBER CHANNEL

GREAT WESTERN RLY C^o

H. P. MILES & CO^{ys}

CORPORATION OF BRISTOL

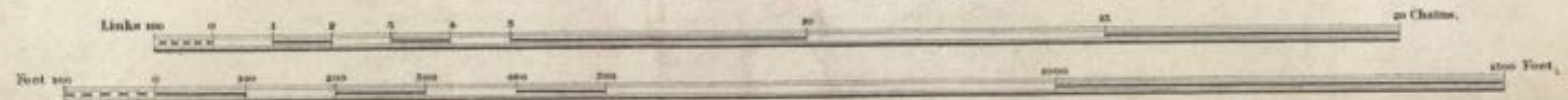
BRISTOL CORPORATION

GREAT WESTERN RLY C^o. MIDLAND RLY C^o

ST. Andrew's Junction

G. COLLINS & AN^o
W. H. HARFORD & AN^o

Scale, 2 Chains to an Inch.



COUNTY OF GLOUCESTER

CITY & COUNTY BOROUGH OF BRISTOL

(FORMERLY PARISH OF WESTBURY UPON TRYM)



BRISTOL

CORPORATION

GREAT

WESTERN

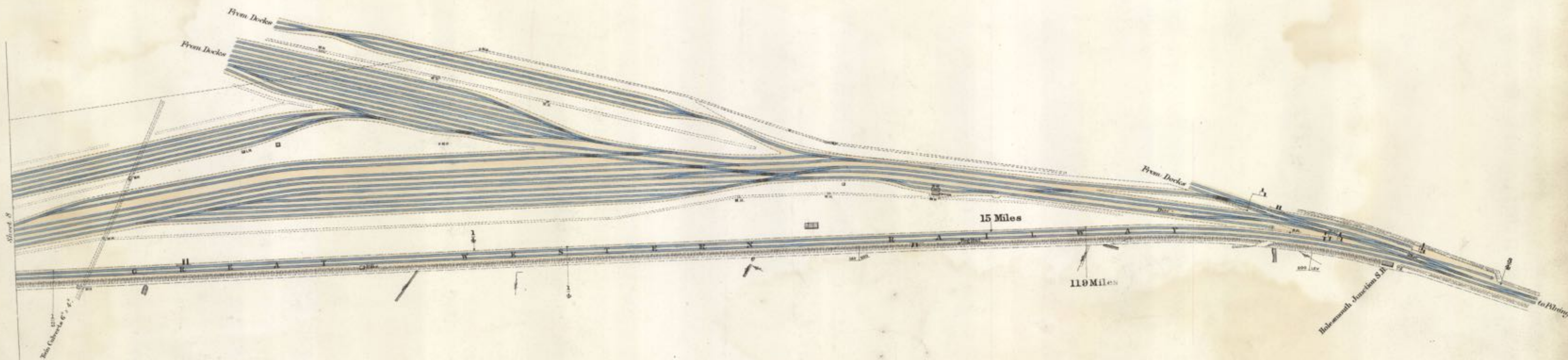
R.L.Y.

C.P.

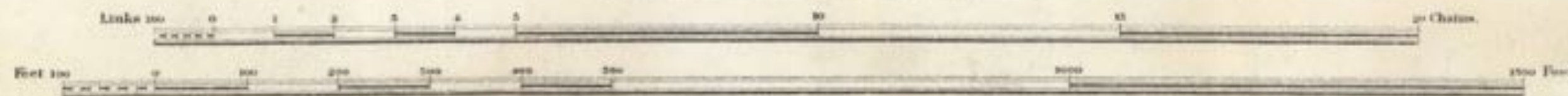
MIDLAND

R.L.Y.

C.P.



Scale. 2 Chains to an Inch.



Estate Agents Office,
Midland Railway,
Derby.