

MIDLAND RAILWAY.

LONDON DEPOTS

LAND PLAN

1919.

RATING SURVEYOR'S OFFICE,
DERBY.

792

MIDLAND RAILWAY.

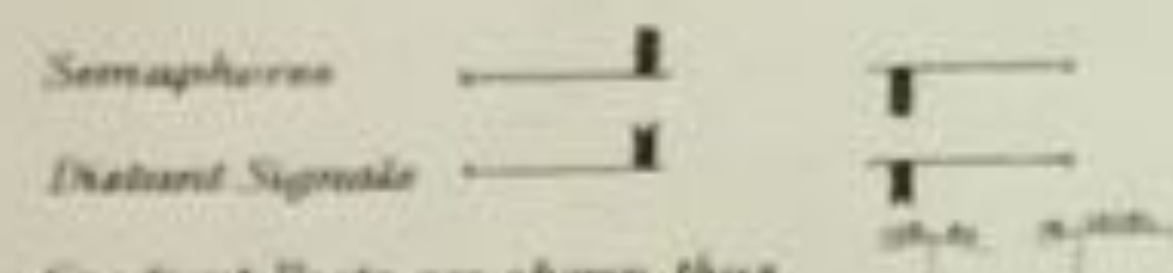
LONDON DEPÔTS

LAND PLAN.

Surveyed by
W. H. C. Clay,
 Estate Agent,
 Derby
 January, 1920

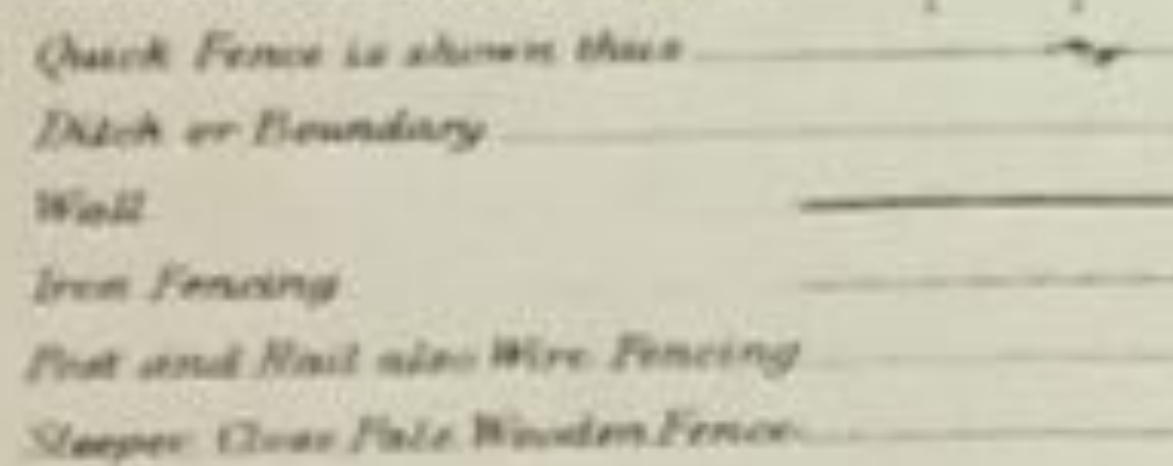
Reference.

SIGNALS, &c. The Signals are shown as they appear to view



Gradient Posts are shown thus

FENCES



For Titles of Acts see next sheet.

COLORING The Companies' FREEHOLD Property is shown by RED Colour

Do LEASEHOLD do	RED EDGE ONLY
Property owned JOINTLY with other Companies	GREEN Colour
Do over or through which the Company has an EASEMENT is shown by	RED dotted lines
Do over or through which the Company has granted an EASEMENT is shown by	PURPLE dotted lines
Do granted on LEASE by the Company by	RED Full lines
Do SOLD or otherwise disposed of by the Company is shown by	PURPLE colour
MINERALS specially purchased by the Company shown by	RED Full lines
Do SOLD or otherwise disposed of by the Company shown by	PURPLE Full lines

NOTE—Vendor Names are written in black as VENDOR
 The figures within the circle after the names of the Vendors refer to the numbers on the deeds relating to the purchase.
 The standing figures as 11 refer to Particulars when numbers 11 are written within a triangle as 11 are the Particulars numbers referring to subsequent Acts.

LONDON DEPÔTS.

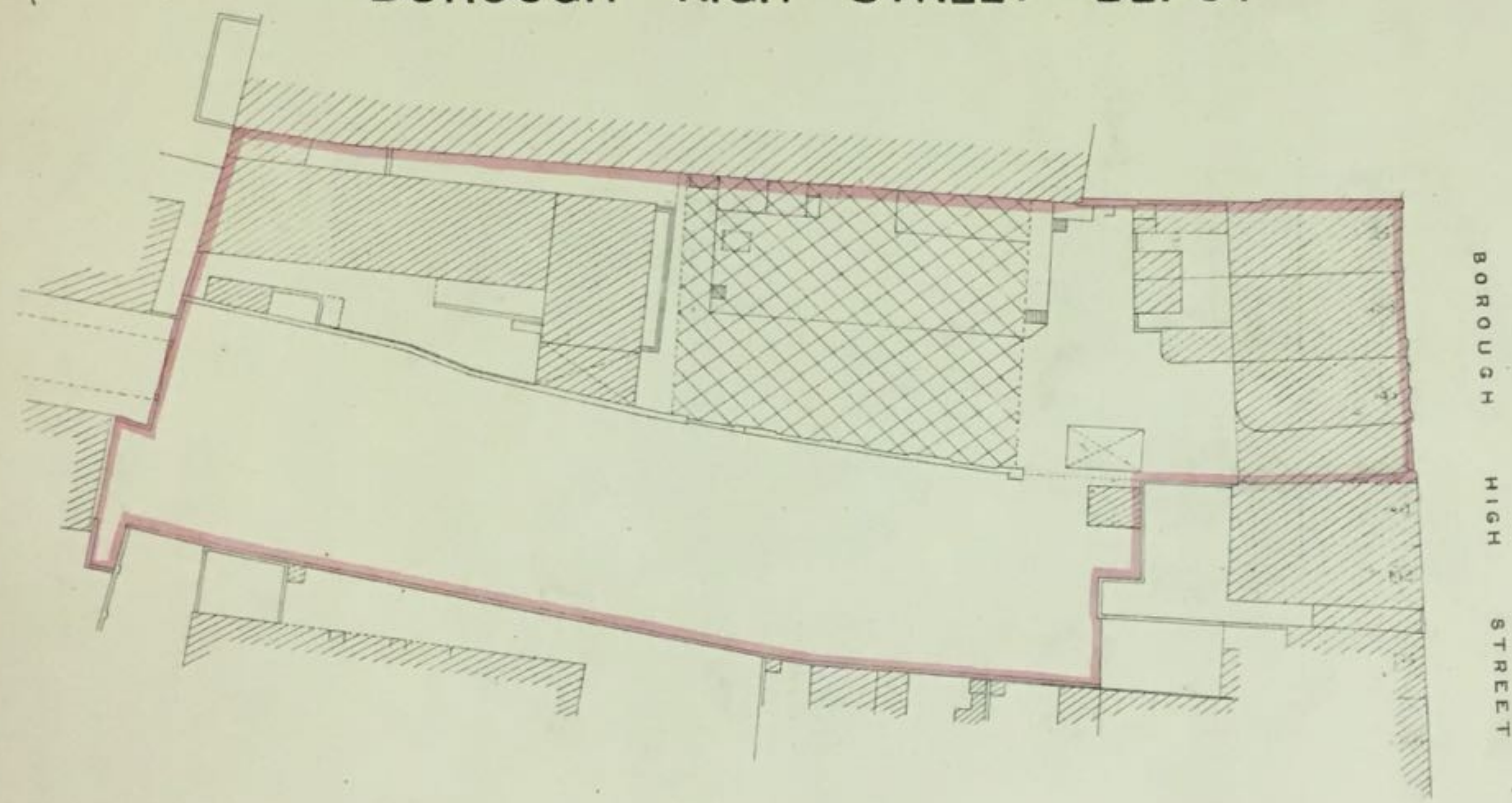
Titles of Acts.

BOW GOODS DEPÔT.															
The Midland Railway	—	—	—	—	—	—	—	Bow Branches	—	—	—	—	—	Act 1889, 52 & 53 Vict.	Royal Assent 24th June, 1889.
Do.	—	—	—	—	—	—	—	Lands	—	—	—	—	—	Act 1894, 57 & 58 Vict.	do. 20th July, 1894.
BRIXTON COAL DEPÔT.															
Do.	(Additional Powers)	—	—	—	—	—	—	Brixton Station Branches	—	—	—	—	—	Act 1875, 38 & 39 Vict.	do. 29th June, 1875.
COMMERCIAL ROAD GOODS DEPÔT.															
The London Tilbury & Southend Railway	—	—	—	—	—	—	—	Whitechapel Goods Branch	—	—	—	—	—	Act 1882, 45 & 46 Vict.	do. 24th July, 1882.
Do.	do.	—	—	—	—	—	—	Do.	do.	Alteration of Power	—	—	—	Act 1884, 47 & 48 Vict.	do. 14th July, 1884.
The Midland Railway (London Tilbury & Southend Railway Purchase)	—	—	—	—	—	—	—	Vesting and Other Purposes	—	—	—	—	—	Act 1912, 2 & 3 Geo. V.	do. 7th Aug., 1912.
HIGH STREET KENSINGTON DEPÔT.															
Do.	(Additional Powers)	—	—	—	—	—	—	Kensington Line	—	—	—	—	—	Act 1878, 41 Vict.	do. 17th June, 1878.
POPLAR DOCKS.															
The Midland Railway (New Works, etc.)	—	—	—	—	—	—	—	Poplar Branch	—	—	—	—	—	Act 1876, 39 & 40 Vict.	do. 13th July, 1876.
Do.	(Additional Powers)	—	—	—	—	—	—	—	—	—	—	—	—	Act 1881, 44 & 45 Vict.	do. 18th July, 1881.
The Great Eastern Railway (General Powers)	—	—	—	—	—	—	—	Agreement as to Lands	—	—	—	—	—	Act 1895, 56 Vict.	do. 9th June, 1895.
ROYAL MINT STREET DEPÔT.															
The Midland Railway (New Works, etc.)	—	—	—	—	—	—	—	—	—	—	—	—	—	Act 1876, 39 & 40 Vict.	do. 13th July, 1876.
Do.	(Additional Powers)	—	—	—	—	—	—	—	—	—	—	—	—	Act 1880, 43 & 44 Vict.	do. 6th Aug., 1880.
Do.	(Do.)	—	—	—	—	—	—	—	—	—	—	—	—	Act 1883, 46 & 47 Vict.	do. 16th July, 1883.
Do.	—	—	—	—	—	—	—	Stopping up part of Swallows Gardens	—	—	—	—	—	Act 1898, 61 & 62 Vict.	do. 1st July, 1898.
The London & Blackwall Railway	—	—	—	—	—	—	—	Agreement as to Station Accommodation	—	—	—	—	—	Act 1860, 23 & 24 Vict.	do. 3rd July, 1860.
VICTORIA DOCKS.															
The Midland Railway (Additional Powers)	—	—	—	—	—	—	—	—	—	—	—	—	—	Act 1867, 30 Vict.	do. 12th Aug., 1867.
Do.	(New Works, etc.)	—	—	—	—	—	—	—	—	—	—	—	—	Act 1876, 39 & 40 Vict.	do. 13th July, 1876.
WALWORTH ROAD COAL DEPÔT.															
The Midland Railway (Additional Powers)	—	—	—	—	—	—	—	—	—	—	—	—	—	Act 1871, 34 & 35 Vict.	do. 29th June, 1871.
Do.	(Do.)	—	—	—	—	—	—	—	—	—	—	—	—	Act 1874, 37 & 38 Vict.	do. 30th July, 1874.
Do.	(Do.)	—	—	—	—	—	—	—	—	—	—	—	—	Act 1882, 45 & 46 Vict.	do. 12th July, 1882.
WANDSWORTH ROAD GOODS & COAL DEPÔT.															
Do.	(Additional Powers)	—	—	—	—	—	—	—	—	—	—	—	—	Act 1875, 36 & 37 Vict.	do. 28th July, 1875.
Do.	(Do.)	—	—	—	—	—	—	—	—	—	—	—	—	Act 1897, 60 & 61 Vict.	do. 6th Aug., 1897.
WEST INDIA DOCK DEPÔT.															
Do.	(Additional Powers)	—	—	—	—	—	—	—	—	—	—	—	—	Act 1880, 43 & 44 Vict.	do. 6th Aug., 1880.
Do.	(Do.)	—	—	—	—	—	—	—	—	—	—	—	—	Act 1881, 44 & 45 Vict.	do. 18th July, 1881.
Do.	(Do.)	—	—	—	—	—	—	—	—	—	—	—	—	Act 1885, 46 & 47 Vict.	do. 16th July, 1885.
WEST KENSINGTON DEPÔT.															
Do.	(New Works, etc.)	—	—	—	—	—	—	—	—	—	—	—	—	Act 1877, 40 & 41 Vict.	do. 28th June, 1877.
Do.	(Additional Powers)	—	—	—	—	—	—	—	—	—	—	—	—	Act 1880, 43 & 44 Vict.	do. 6th Aug., 1880.
WHITECROSS STREET GOODS DEPÔT.															
Do.	(Additional Powers)	—	—	—	—	—	—	—	—	—	—	—	—	Act 1875, 36 & 37 Vict.	do. 28th July, 1875.
Do.	(New Works)	—	—	—	—	—	—	—	—	—	—	—	—	Act 1876, 39 & 40 Vict.	do. 15th July, 1876.

METROPOLITAN BOROUGH OF SOUTHWARK

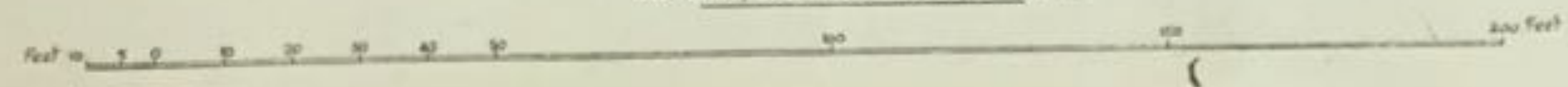
PARISH OF ST. GEORGE THE MARTYR

BOROUGH HIGH STREET DEPÔT



BOROUGH
HIGH
STREET

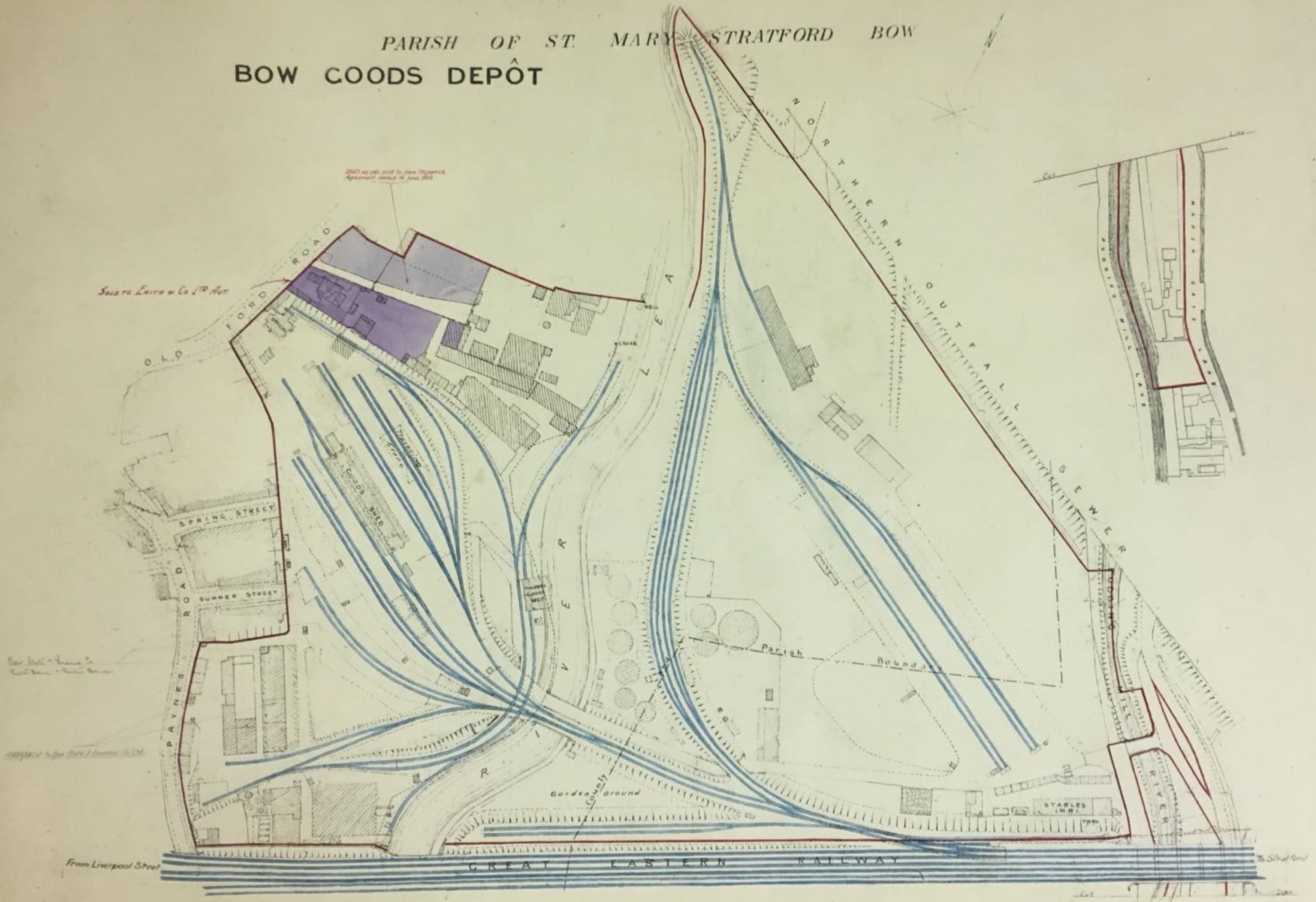
Scale 20 Feet to an Inch



METROPOLITAN BOROUGH OF POPLAR

1901-1902

PARISH OF ST. MARY STRATFORD BOW BOW COODS DEPÔT



Scale 88 Feet to an Inch

0 100 200 300 400 500 600 Feet

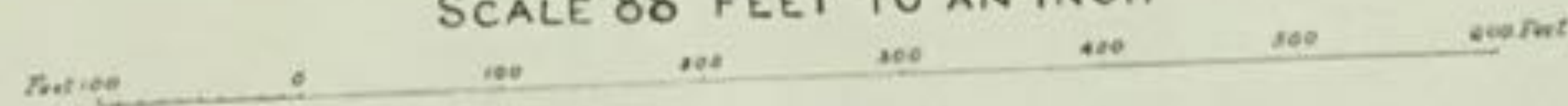
METROPOLITAN BOROUGH OF LAMBETH

BRIXTON

COAL DEPÔT



SCALE 88 FEET TO AN INCH

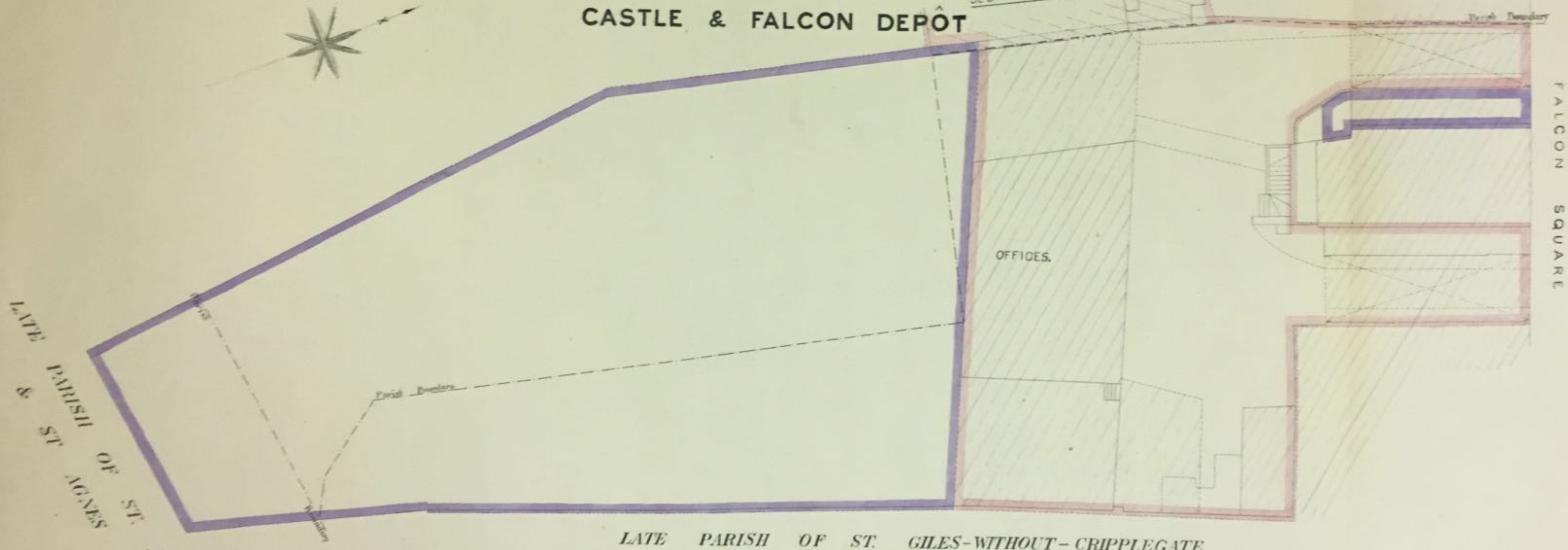


C I T Y O F L O N D O N

LATE PARISH OF ST BOTOLPH-WITHOUT-ALDERSGATE

CASTLE & FALCON DEPOT

SEE PLAN N^o 2



LATE PARISH OF ST. GILES-WITHOUT-CRIPPLEGATE

LATE PARISH OF ST. AGNES & ST. ANNE

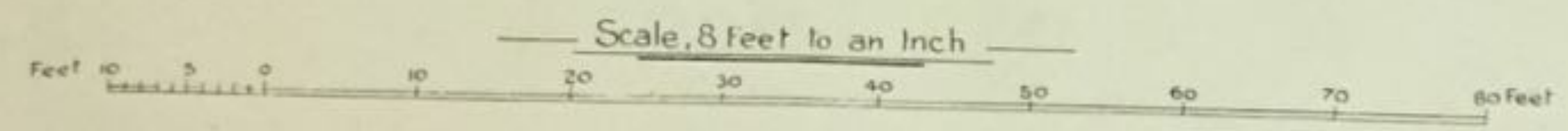
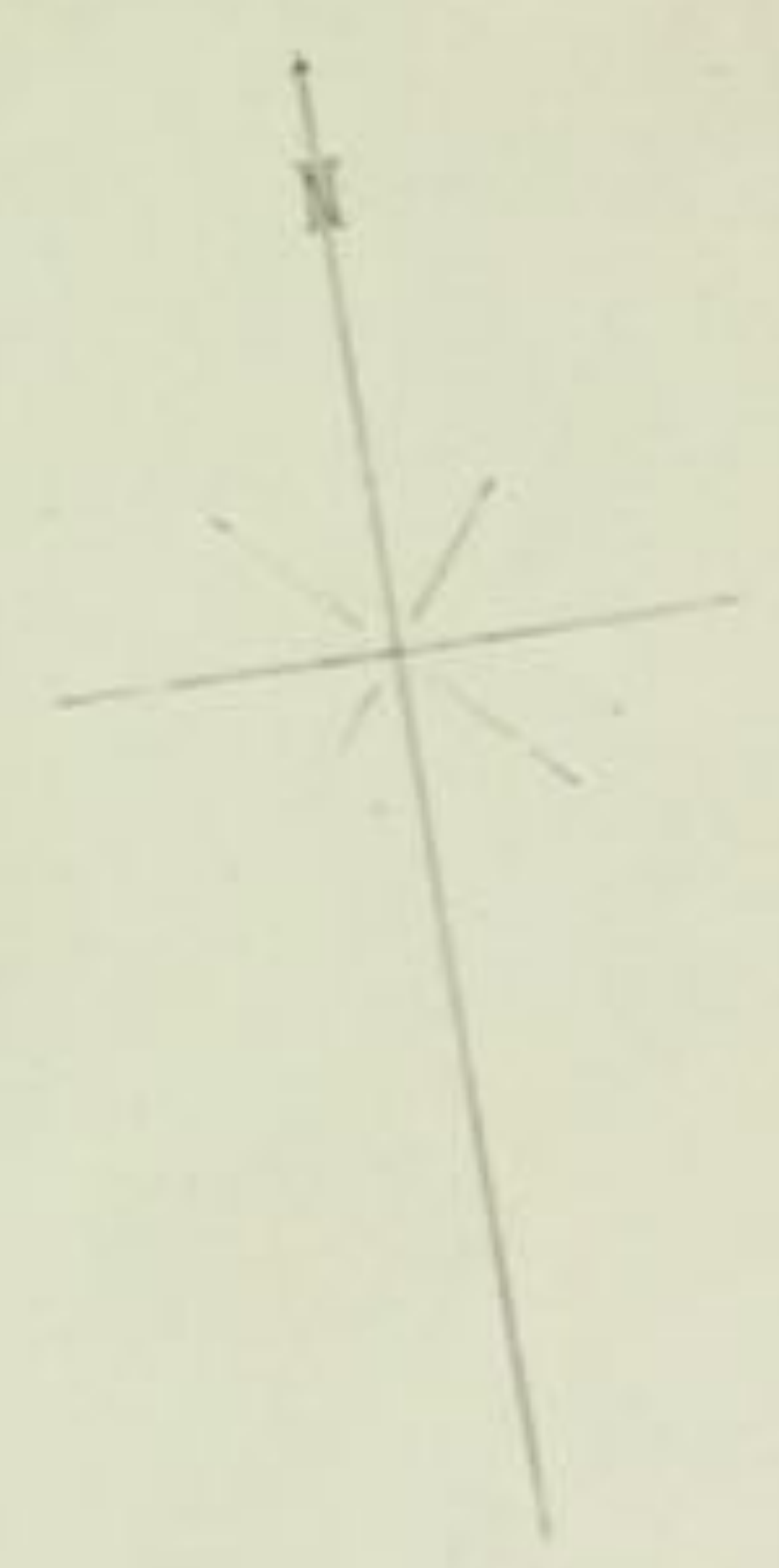
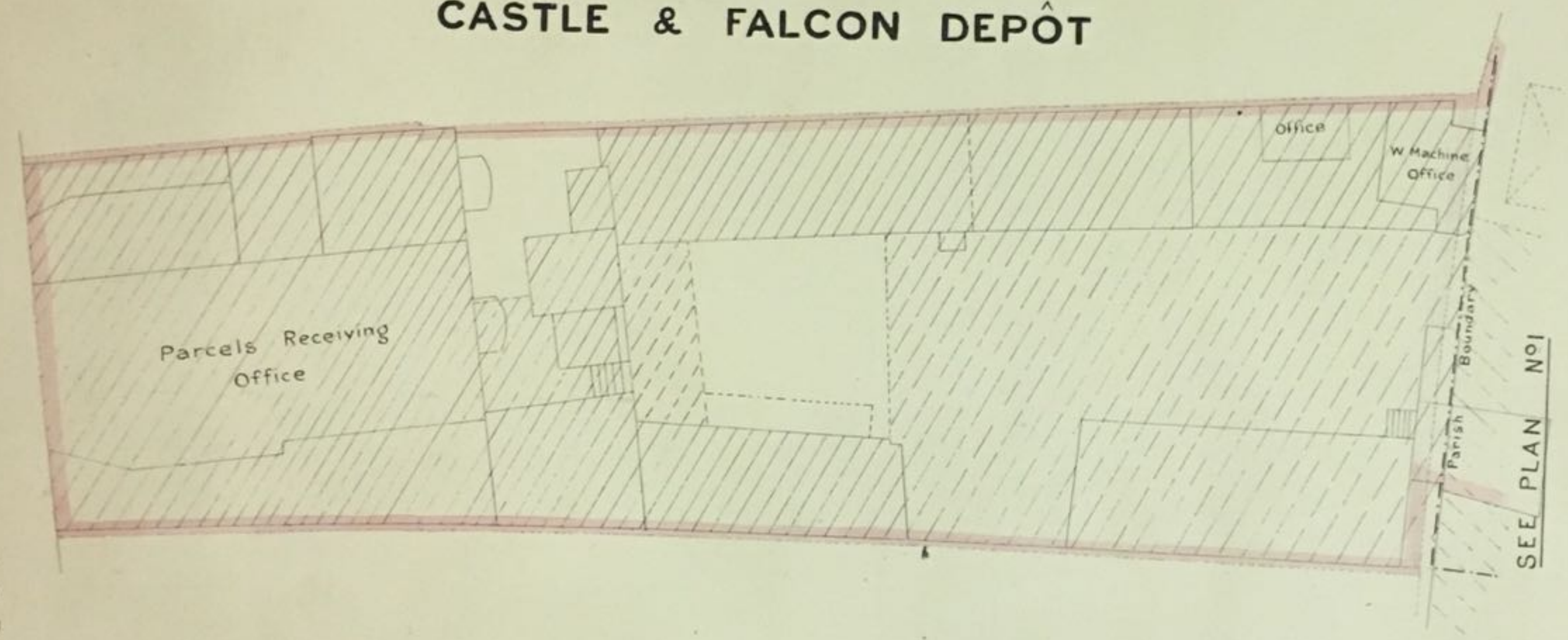
Scale, 8 Feet to an Inch.
Feet 0 5 10 20 30 40 50 60 70 80

C I T Y O F L O N D O N

LATE PARISH OF ST. BOTOLPH-WITHOUT-ALDRSGATE

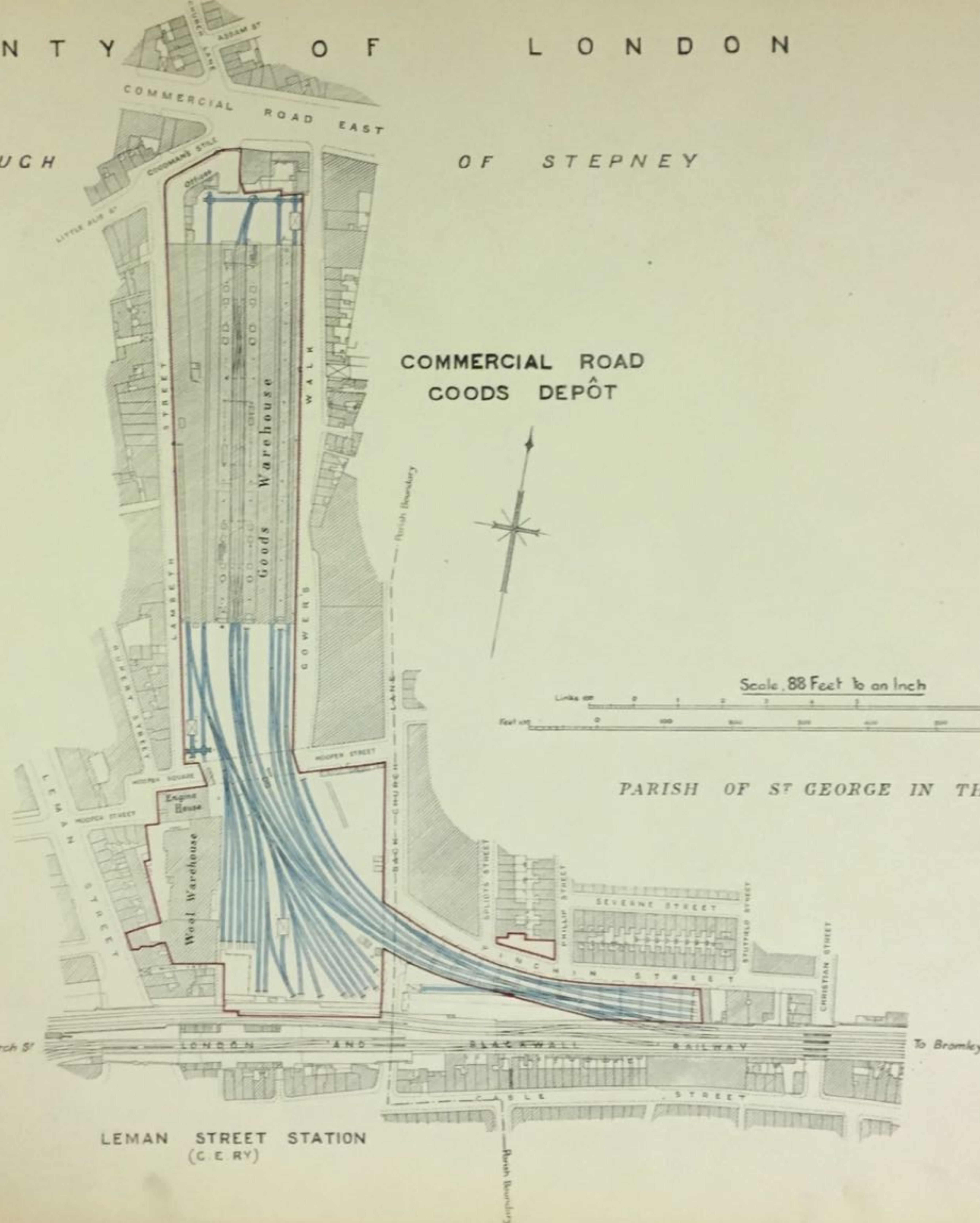
CASTLE & FALCON DEPÔT

A L D E R S G A T E
S T R E E T



METROPOLITAN BOROUGH
PARISH OF WHITECHAPEL

OF STEPNEY



COMMERCIAL ROAD
GOODS DEPOT



Scale 88 Feet to an Inch

PARISH OF ST GEORGE IN THE EAST

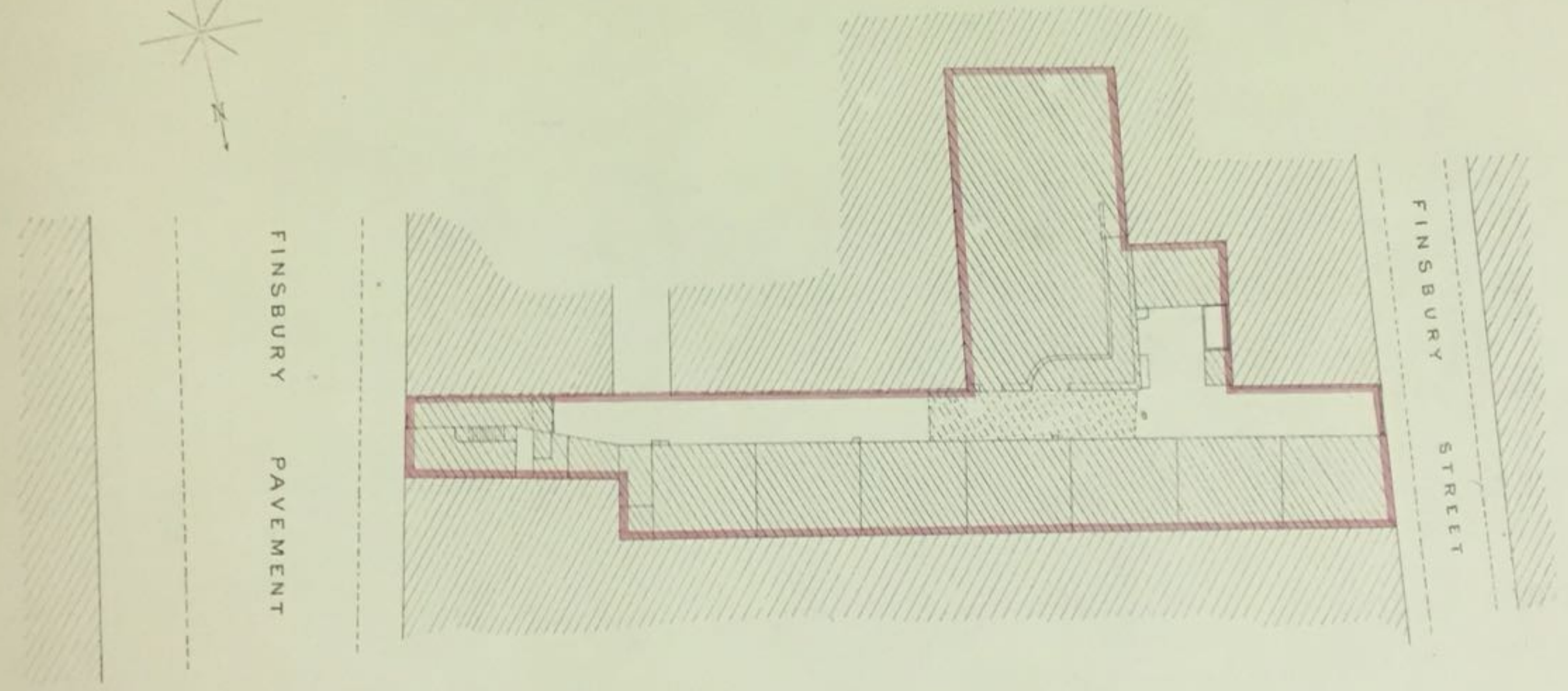
LEMAN STREET STATION
(CERY)

From Fenchurch St

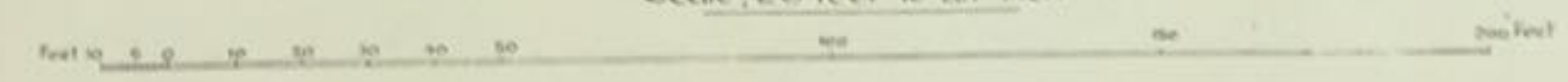
To Bromley

METROPOLITAN BOROUGH OF FINSBURY

STABLES & OFFICES FINSBURY PAVEMENT

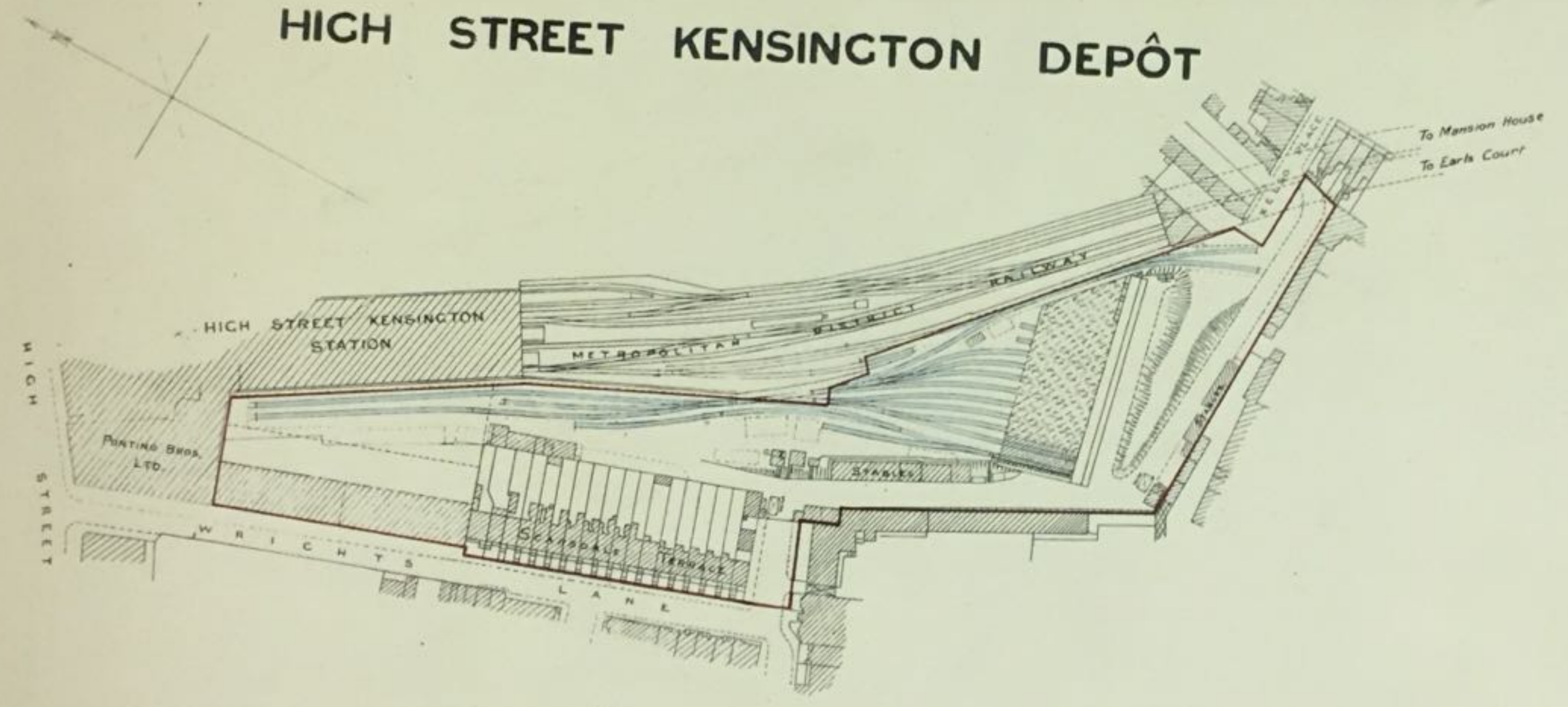


Scale, 20 feet to an Inch



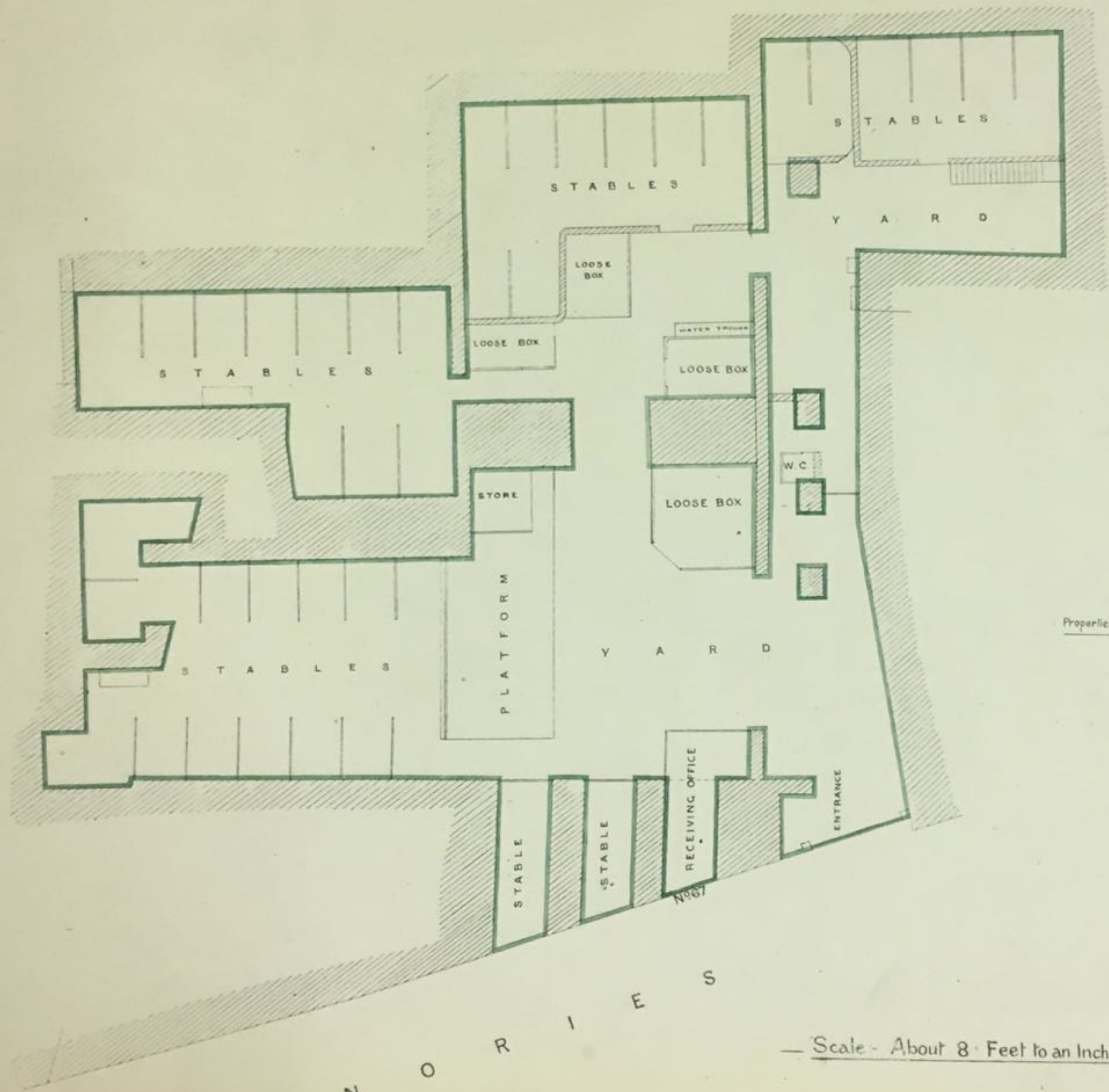
METROPOLITAN BOROUGH OF KENSINGTON

HIGH STREET KENSINGTON DEPÔT



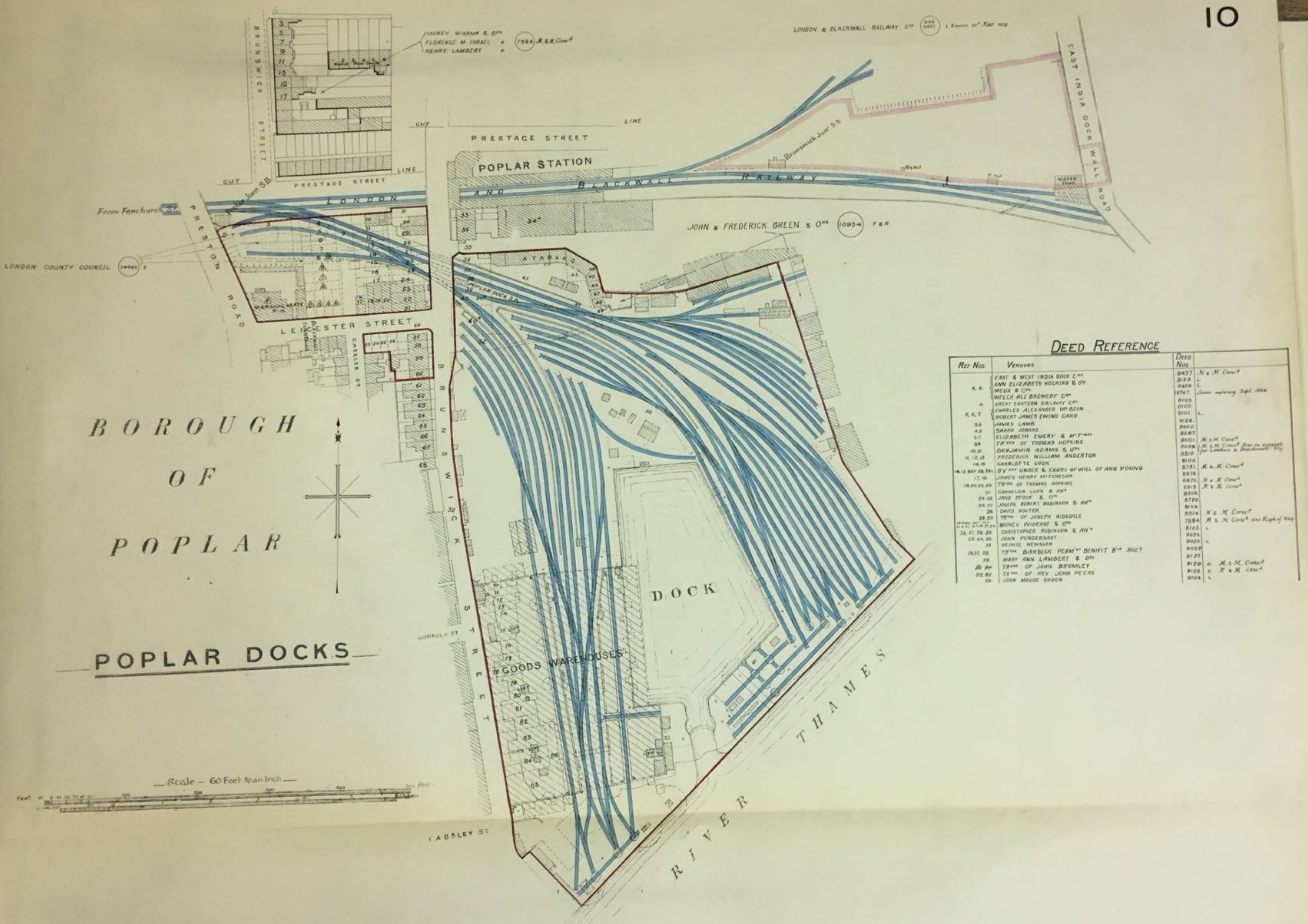
— Scale, 88 Feet to an Inch —
Feet 0 100 200 300 400 500 600 Feet

(LATE PARISH OF ST BOTOLPH ALDGATE)
MINORIES STABLES & RECEIVING OFFICE



Properties edged green, rented from GERBY

Scale - About 8 Feet to an Inch

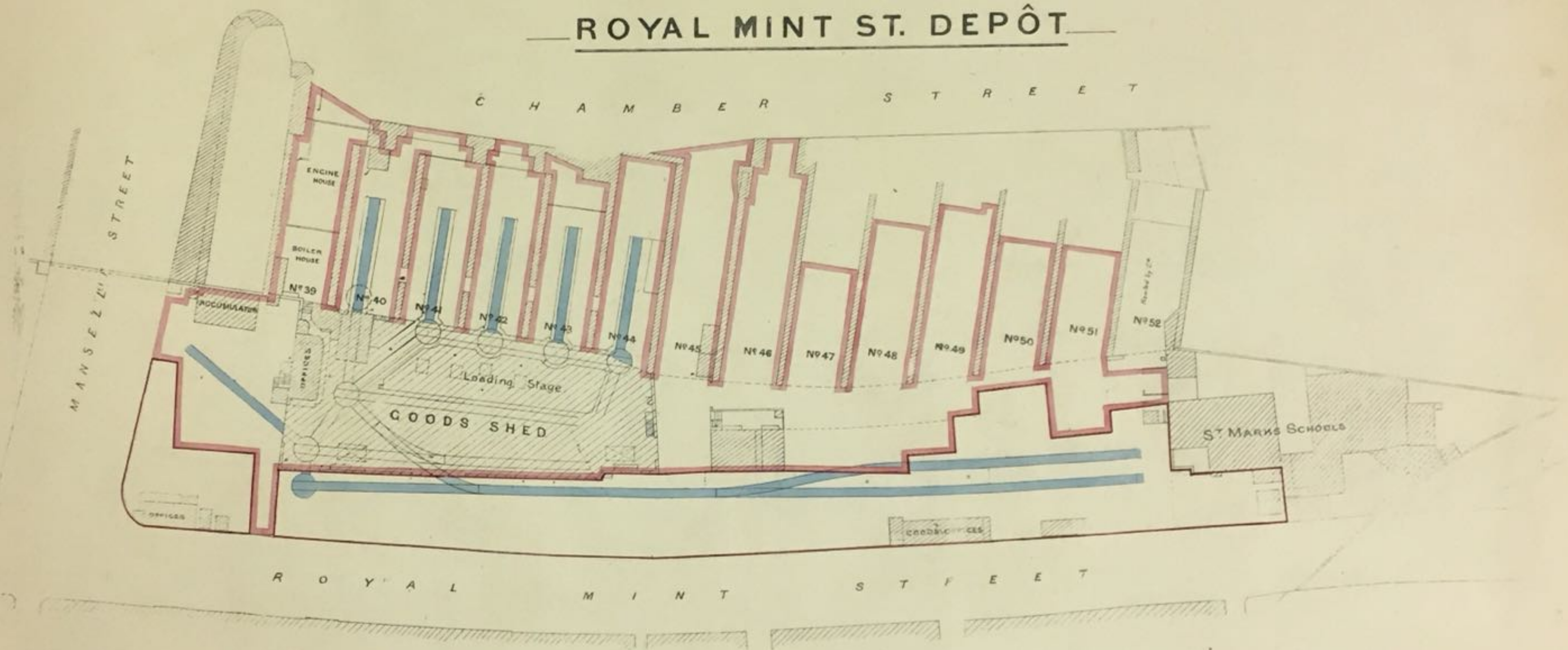


DEED REFERENCE

Ref Nos	Vendors	Deed Nos	
	EAST & WEST INDIA DOCK CO ^Y	9437	M & H Con ^Y
	ANN ELIZABETH HOCKING & CO ^Y	9425	L
2, 3	MELIX & CO ^Y	9425	L
	WELCH ALE BREWERY CO ^Y	9747	Con ^Y expiring Sept. 1924
4	GREAT EASTERN RAILWAY CO ^Y	9025	
5, 6, 7	CHARLES ALEXANDER M ^Y SEAN ROBERT JAMES EWING CARD	9102	
	JAMES LAMB	9126	L
22	SARAH JERRARD	9600	
23	ELIZABETH EMERY & M ^Y T ^Y	9597	
24	TR ^Y OF THOMAS HOPKINS	9501	M & H Con ^Y
25, 26	BENJAMIN ADAMS & CO ^Y	9099	M & H Con ^Y also re assigned for London & Blackwall City
27, 28	FREDERICK WILLIAM ANDERTON CHARLOTTE GOOD	9310	
29, 30	BY ^Y UNDER & EXORS OF WILL OF ANN YOUNG	9151	M & H Con ^Y
31, 32	JAMES HENRY MITCHELL	9276	
33, 34, 35	TR ^Y OF THOMAS HOPKINS	9875	M & H Con ^Y
36	CORNELIUS LOCK & AN ^Y	9315	M & H Con ^Y
37	JANE STOCK & CO ^Y	9316	
38, 39	JOSEPH ROBERT ROBINSON & AN ^Y	9729	
40	DAVID SOUTER	9144	
41, 42	TR ^Y OF JOSEPH RIDSOLE	9314	M & H Con ^Y
43, 44, 45	MONEY WIGRAM & CO ^Y	7884	M & H Con ^Y also Right of Way
46, 47, 48	CHRISTOPHER ROBINSON & AN ^Y	9103	L
49, 50	JOHN PENDERBET	9026	
51	GEORGE NEWMAN	9028	L
52, 53	TR ^Y BIRKBECK PERM ^Y BENEFIT B ^Y SOCI ^Y	9127	
54	MARY ANN LANDERT & CO ^Y	9129	M & H Con ^Y
55	TR ^Y OF JOHN BROMLEY	9125	M & H Con ^Y
56	TR ^Y OF REV JOHN PEERS JOHN MAUDE OGDEN	9024	L

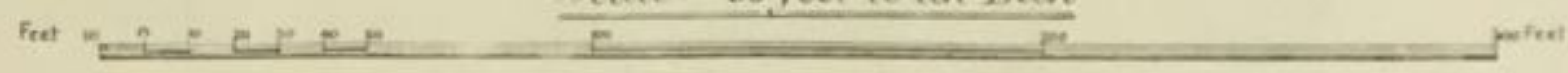
BOROUGH OF STEPNEY
(LATE)
(PARISH OF WHITECHAPEL)

ROYAL MINT ST. DEPÔT



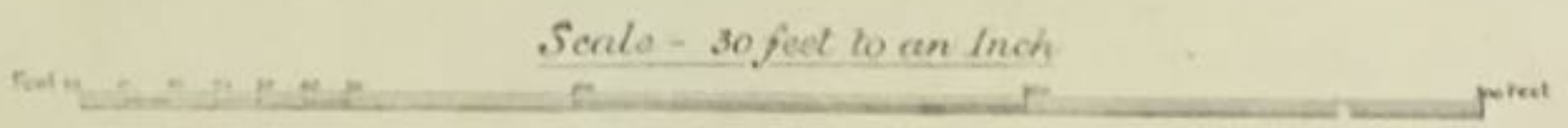
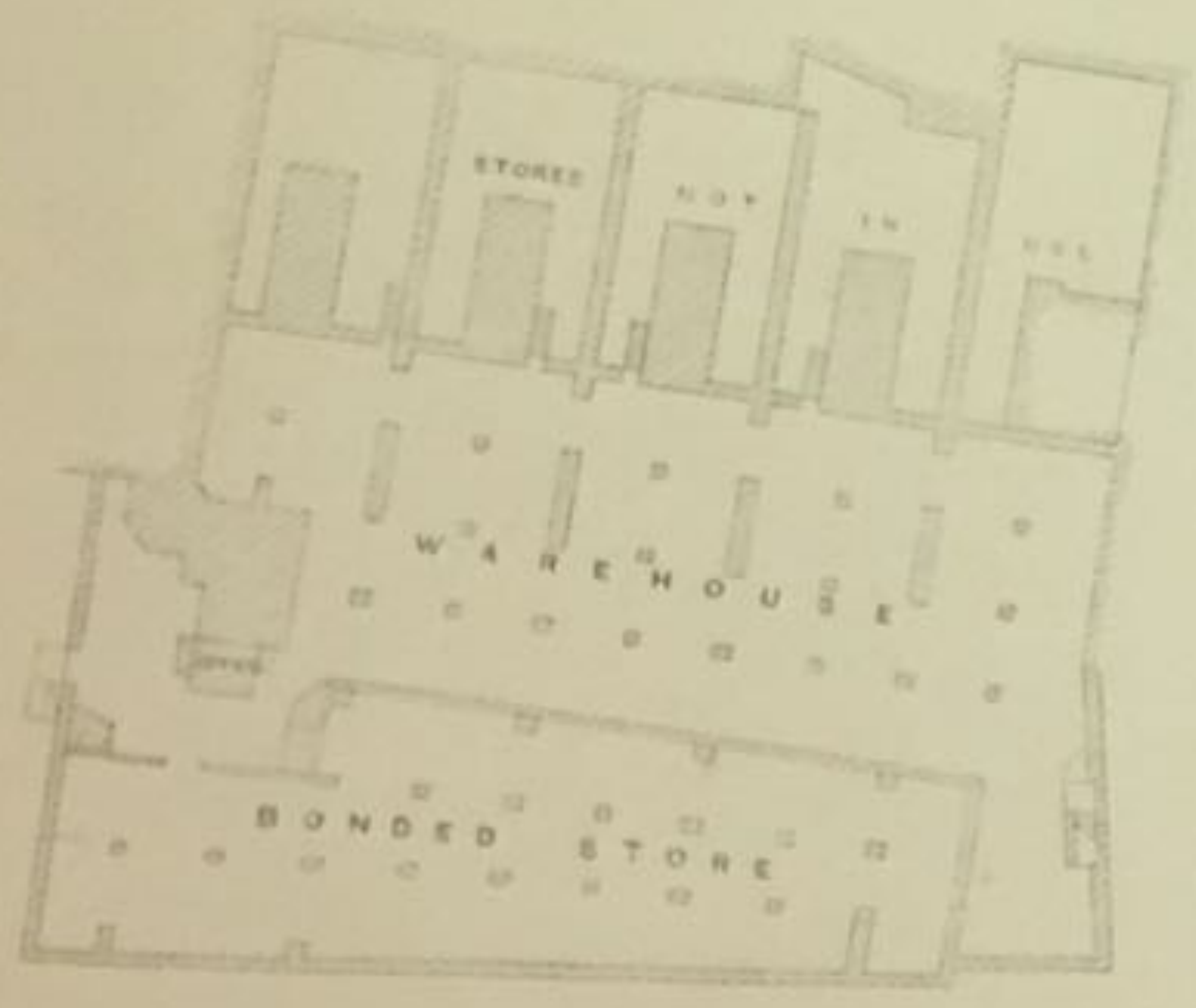
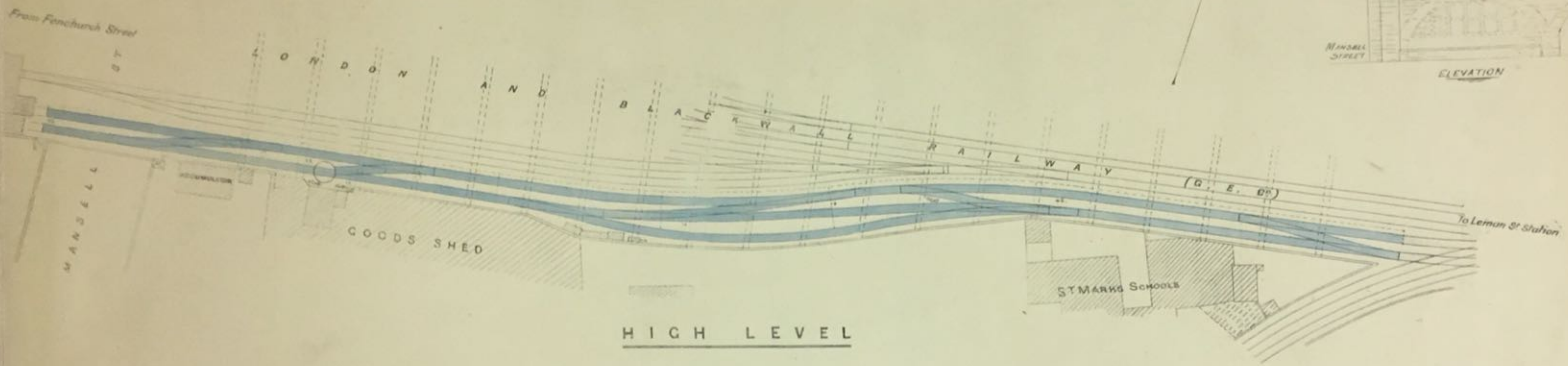
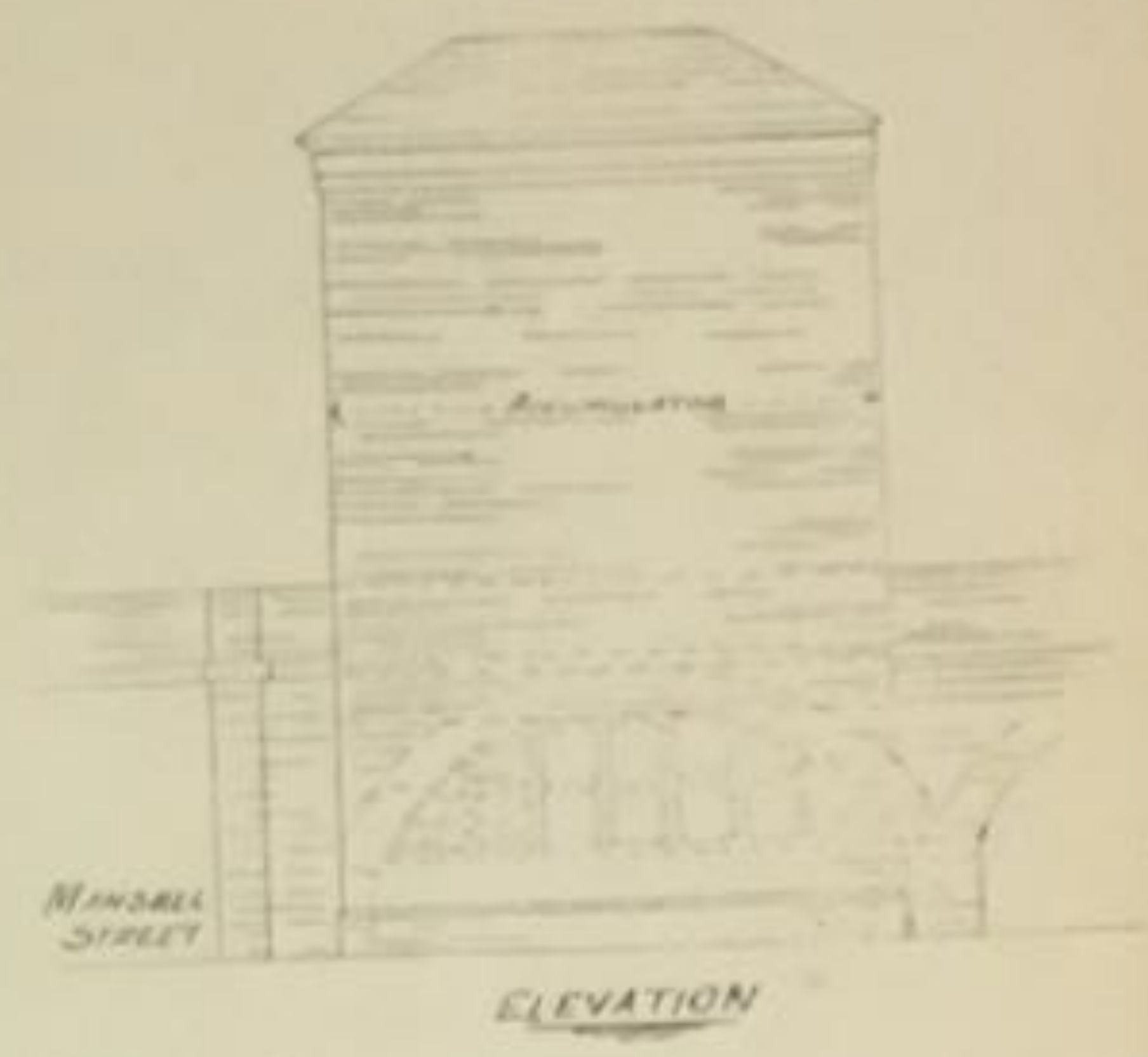
GROUND LEVEL

Scale - 30 feet to an Inch



BOROUGH OF STEPNEY
(LATE)
(PARISH OF WHITECHAPEL)

ROYAL MINT ST. DEPÔT



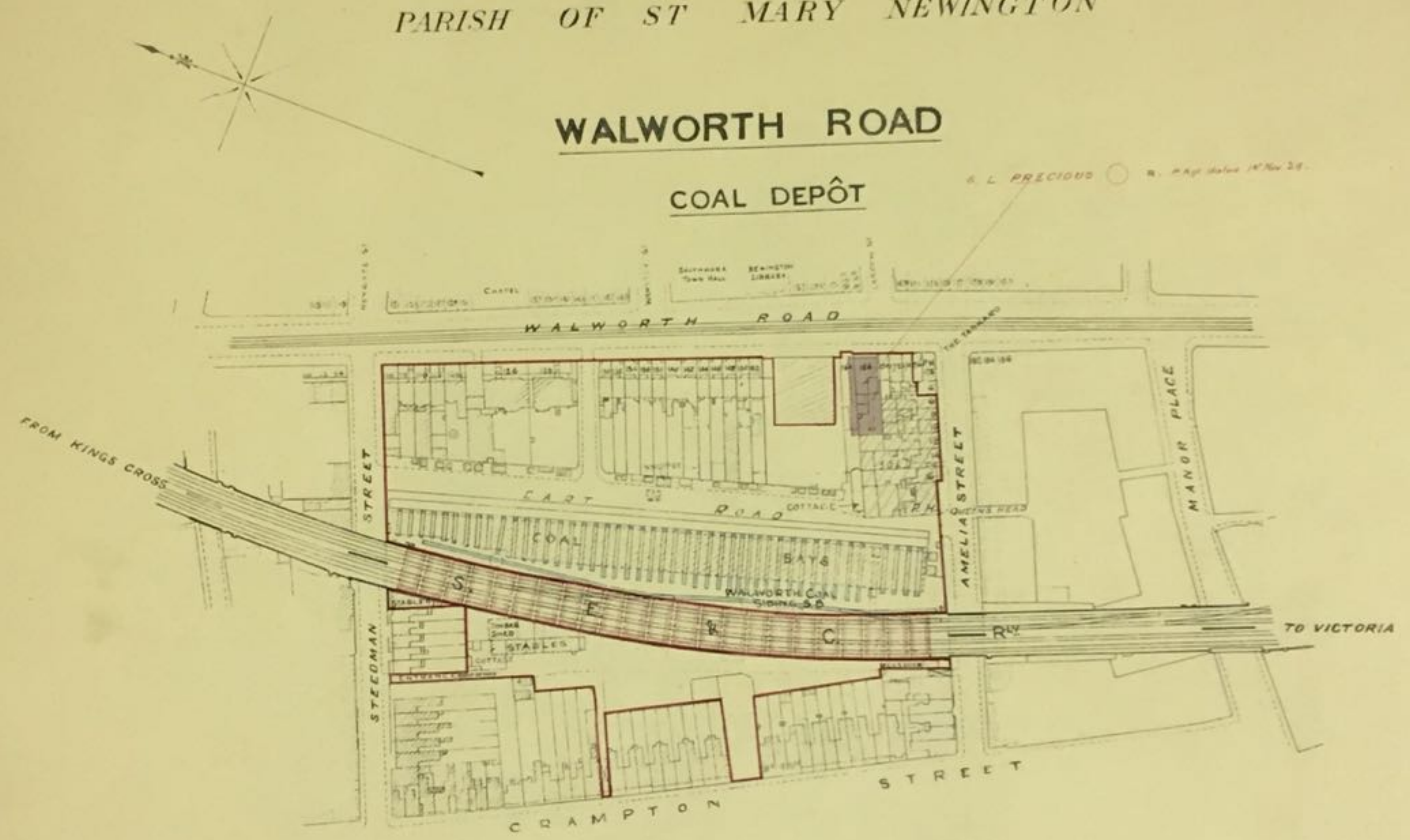
BASEMENT LEVEL

METROPOLITAN BOROUGH OF SOUTHWARK

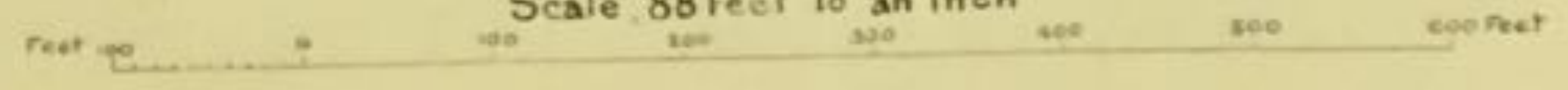
PARISH OF ST MARY NEWINGTON

WALWORTH ROAD

COAL DEPÔT



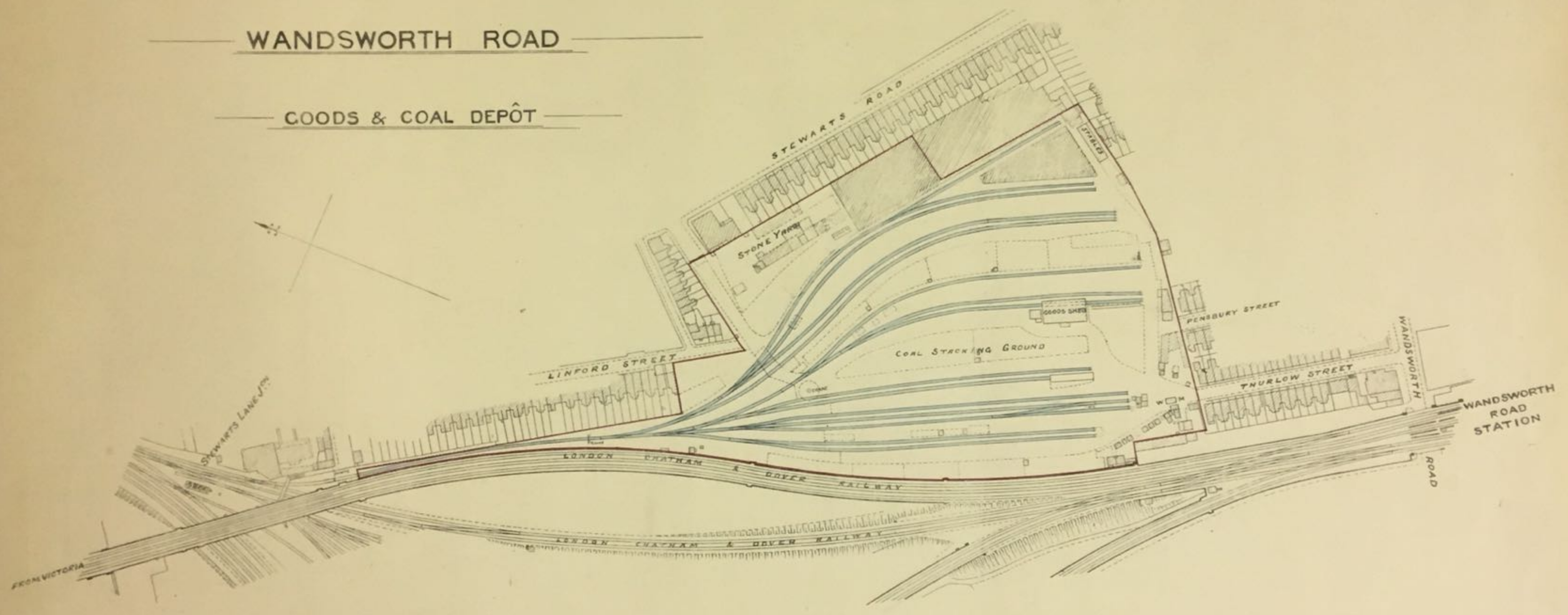
Scale 88 Feet to an Inch



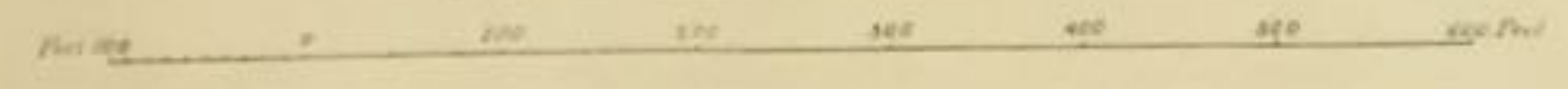
METROPOLITAN BOROUGH OF BATTERSEA

WANDSWORTH ROAD

COODS & COAL DEPÔT



SCALE 88 FEET TO AN INCH

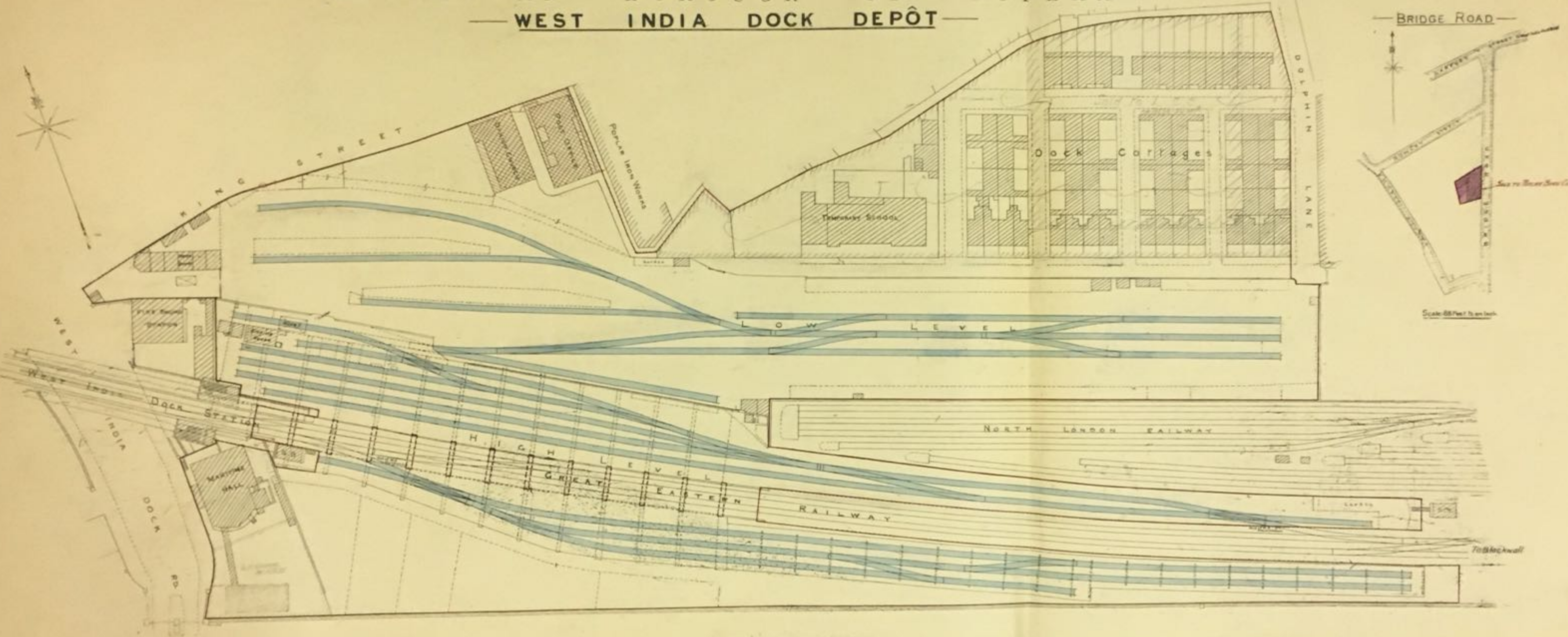


— WEST INDIA DOCK DEPÔT —

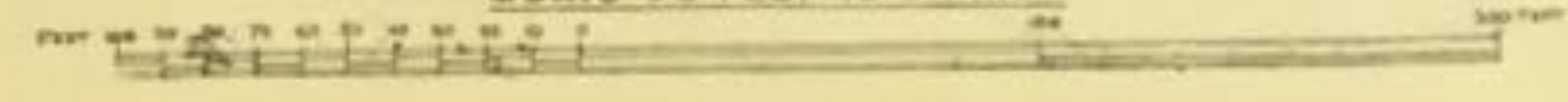


See the River-Side Lines Act 1877

Scale 66 Feet to an Inch



Scale 30 Feet to an Inch



WEST KENSINGTON DEPÔT



EARL'S COURT EXHIBITION GROUNDS

W. Kensington Station

BEAUMONT ROAD

ELI STREET

MILNER STREET

DIEPPE STREET

MIND STREET

BEAUMONT CIRCUS

NORTH ROAD

All the land sold to Metro. Fulham & Dist. Co. 1887

2000 sq yds sold to Fulham Met. Council 1887

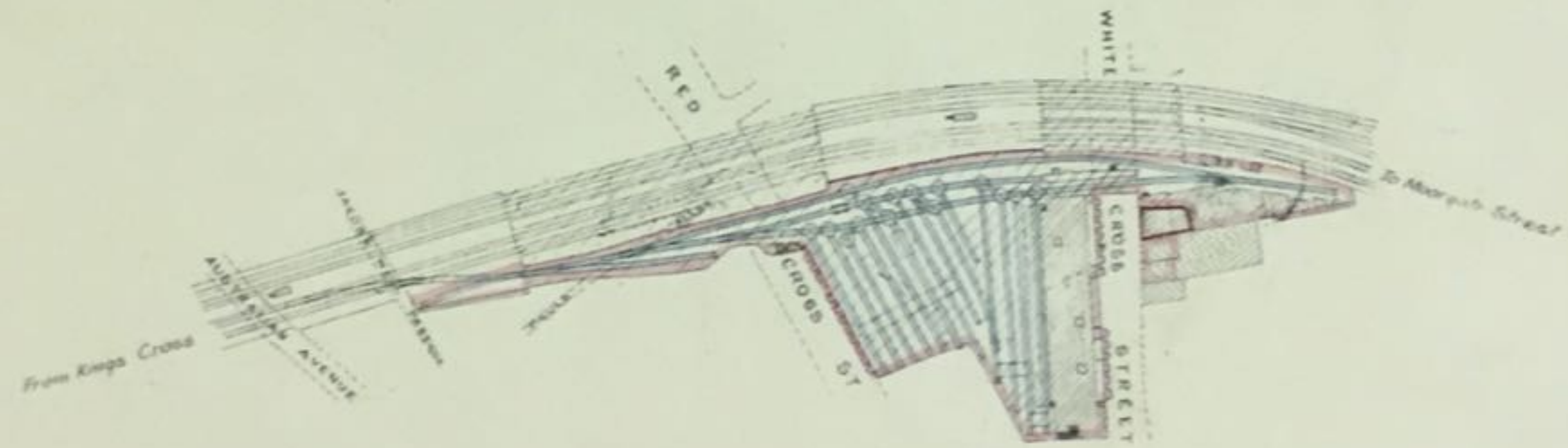
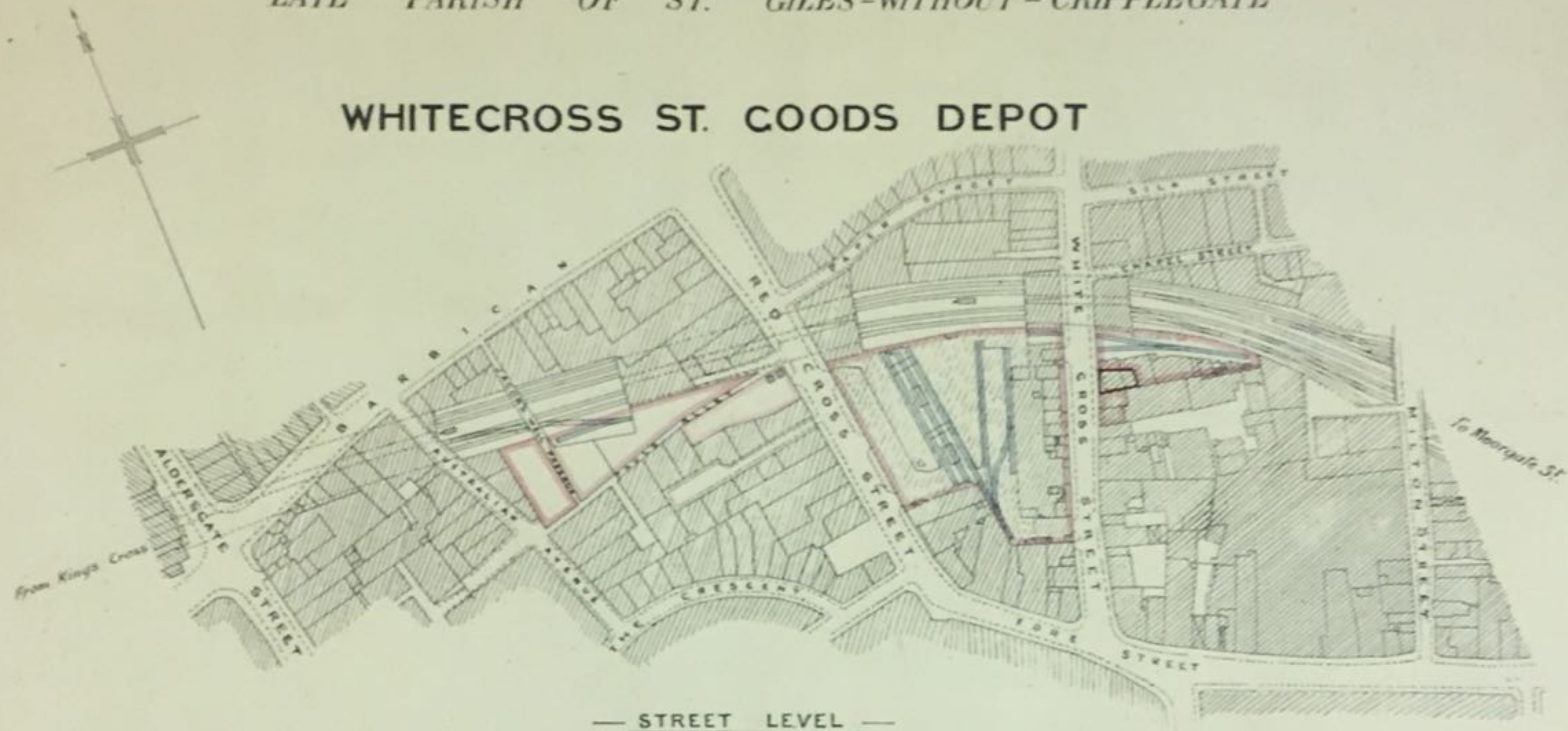
22 sq yds sold to Fulham Met. Council 1887

SCALE OF FEET



LATE PARISH OF ST. GILES-WITHOUT-CRIPPLEGATE

WHITECROSS ST. COODS DEPOT



Scale, 88 Feet to an Inch

