

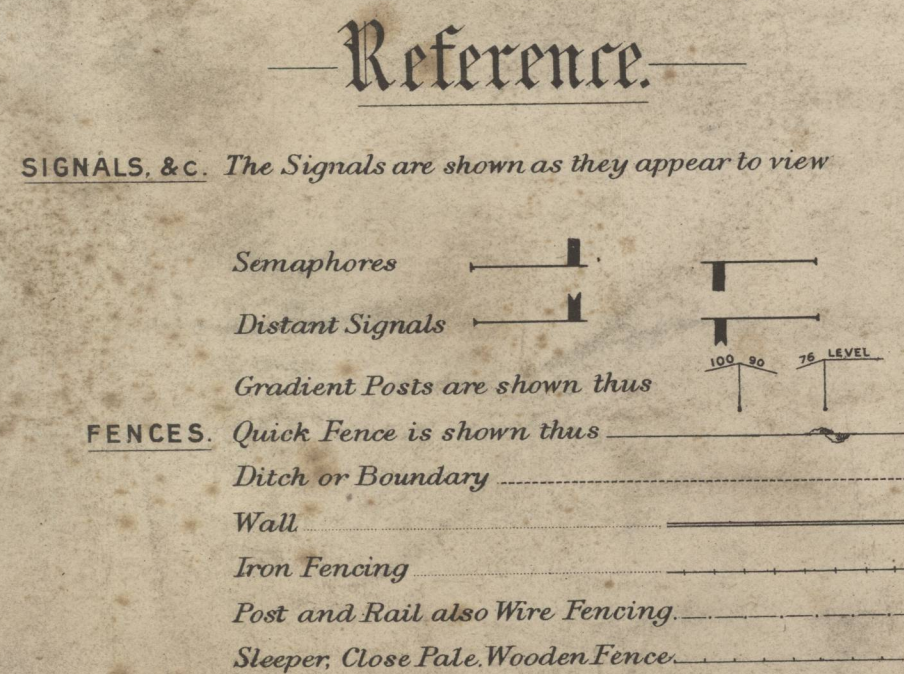
# MIDLAND AND GREAT WESTERN RAILWAYS.

## HOTWELLS TO AVONMOUTH.

# LAND PLAN.

Surveyed by  
*P. S. McCallum,*  
 Estate Agent,  
 Derby.  
 1911.

### Titles of Acts.



Bristol Port Railway and Pier	-	-	-	-	Act 1862—25 & 26 Vict.	Royal Assent 17th July, 1862.
Do.	-	-	-	-	Consolidating, etc.	Do. 29th June, 1865.
Great Western & Midland Railway Co.'s (Clifton & Bristol)	-	-	-	-	Running Powers	Do. 25th May, 1871.
Midland Railway	-	(Additional Powers)	-	-	Block System	Do. 3rd July, 1884.
Bristol Port Railway and Pier	-	-	-	-	Further Money	Do. 7th Aug., 1888.
Midland Railway	-	(Additional Powers)	-	-	Vesting in Midland & Great Western Cos.	Do. 25th July, 1890.
Great Western Railway	-	-	-	-	Widening	Do. 11th Aug., 1903.

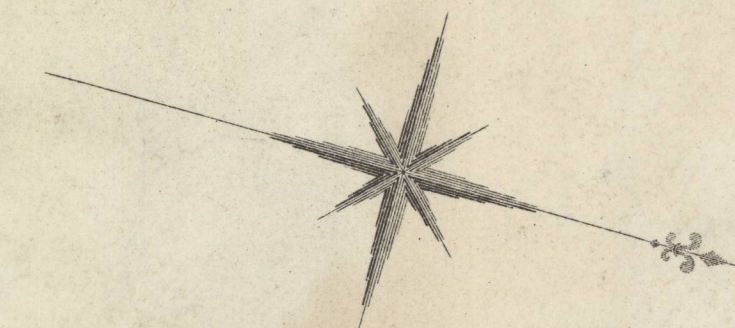
**COLOURING.** The Company's FREEHOLD Property is shown by RED Colour  
 Do. LEASEHOLD do. RED EDGE ONLY  
 Property owned JOINTLY with other Companies GREEN Colour  
 Do. over or through which the Joint Co's have an EASEMENT is shown by GREEN dotted lines.  
 Do. over or through which the Company has granted an EASEMENT is shown by PURPLE dotted lines.  
 Do. granted on LEASE by the Company by RED Full lines.  
 Do. SOLD or otherwise disposed of by the Company is shown by PURPLE colour.  
 MINERALS specially purchased by the Company shown by BLUE Full lines.  
 Do. SOLD or otherwise disposed of by the Company shown by PURPLE Full lines.

**NOTE.** Vendors Names are written in block as VENDOR.  
 The figures within the circle after the names of the Vendors refer to the numbers on the deeds relating to the purchases &c.  
 The slanting figures as 20 refer to Parliamentary numbers (Original Act) Do. within a triangle as 10 are the Parliamentary numbers referring to subsequent Acts.

# COUNTY OF GLOUCESTER

## CITY & COUNTY BOROUGH OF BRISTOL

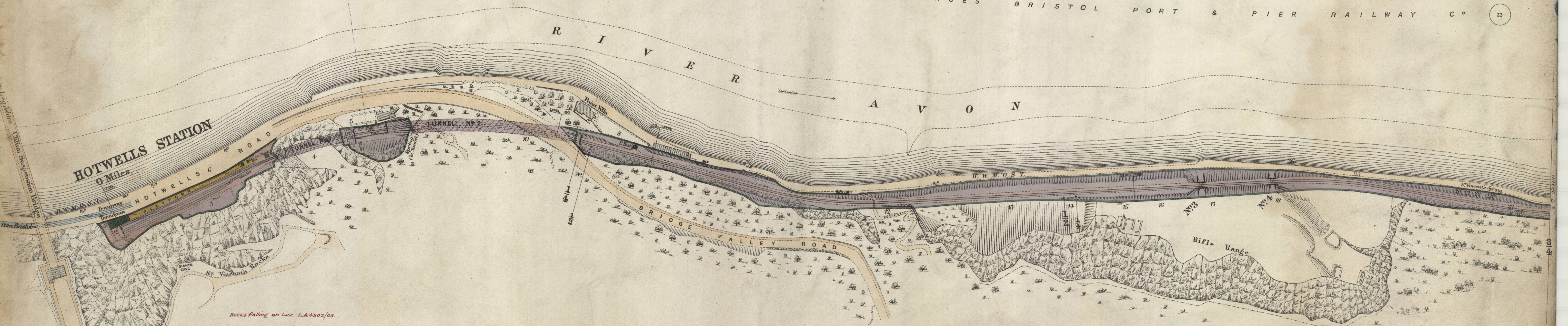
(FORMERLY PARISH OF CLIFTON)



B R I S T O L P O R T

M E S S R S N E L S O N & B E A L E ' S S T A T E M E N T R A I L W A Y & P I E R C O

C O R P O R A T I O N O F B R I S T O L R E U N C O M P L E T E D C O N V E Y A N C E S B R I S T O L P O R T & P I E R R A I L W A Y C O



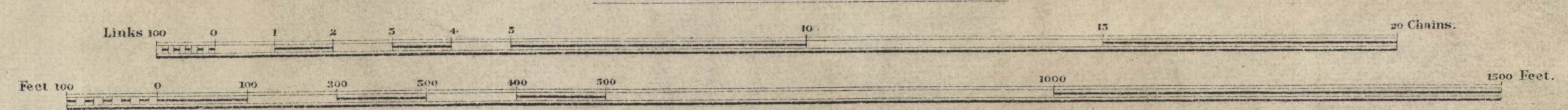
Rocks falling on Line L.A. 4202/08.  
 Station Master's House L.A. 4202/17

S O C I E T Y O F M E R C H A N T V E N T U R E R S O F B R I S T O L

T H E C O R P O R A T I O N O F B R I S T O L

LA 4125/19  
 New Road Co.

Scale, 2 Chains to an Inch.



Estate Agents Office  
 Midland Railway  
 Duty

# COUNTY OF GLOUCESTER

## CITY & COUNTY BOROUGH OF BRISTOL

### FORMERLY PARISH OF WESTBURY UPON TRYM

THE AVON RIVER

MESSRS BRISTOL PORT & PIER RAILWAY CO

W. BAKER

SIR GEORGE WHITE

MAYOR OF BRISTOL

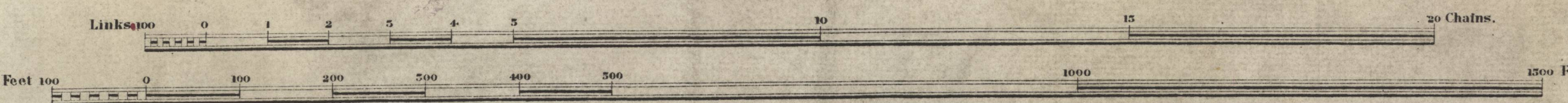
MESSRS NELSON & BEALE'S STATEMENT RE UNCOMPLETED TRAFFIC'S

CORPORATION OF BRISTOL

Exchange of Land Land attached to Bristol Corp. See Sheet 3.



Scale, 2 Chains to an Inch.



Land offered to Commission by G.C. Rose see 06/176

Estate Agents Office, Midland Railway, Derby.

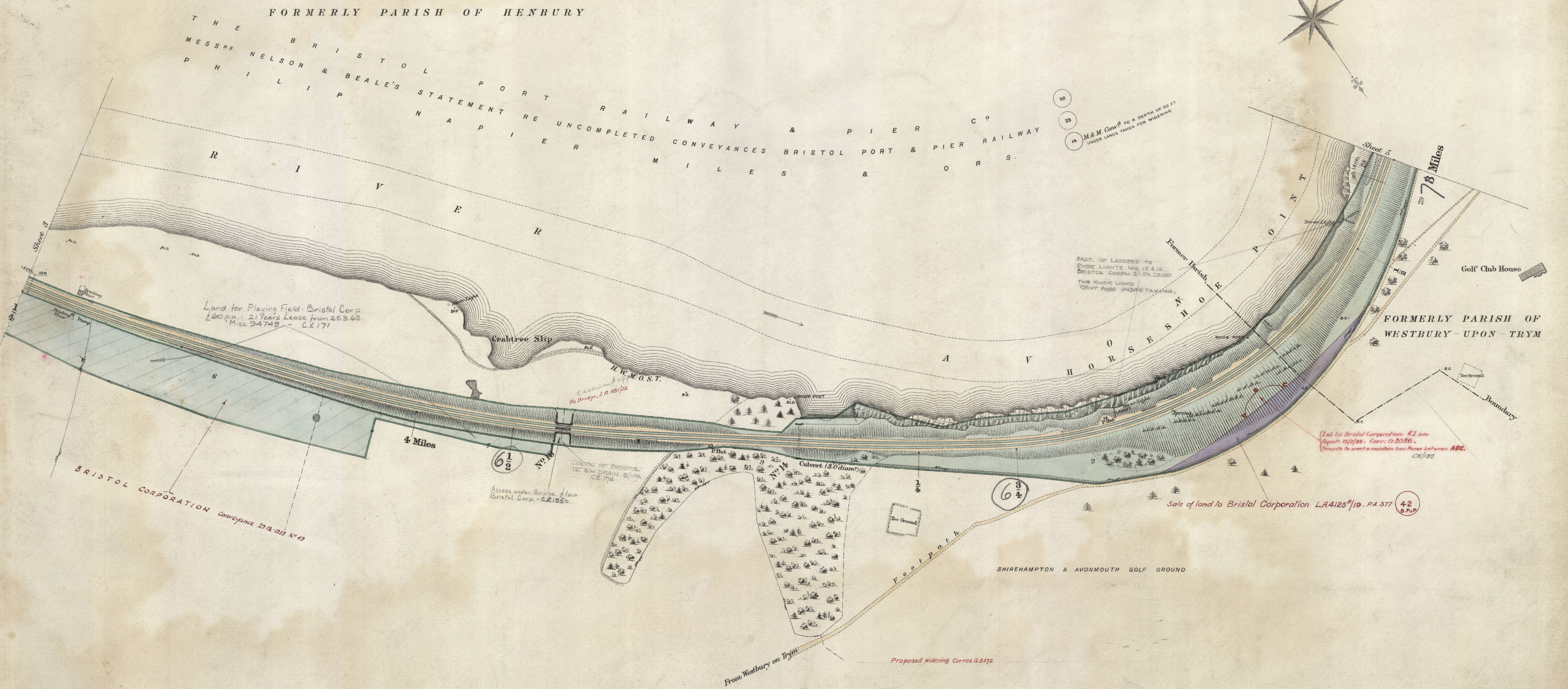
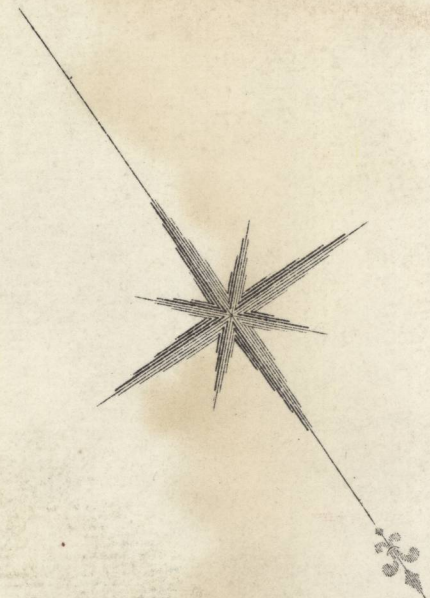


COUNTY OF GLOUCESTER

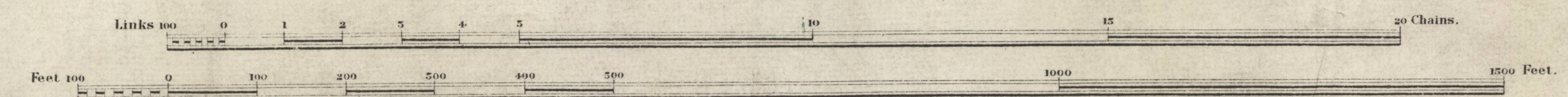
CITY & COUNTY BOROUGH OF BRISTOL

FORMERLY PARISH OF HENBURY

THE BRISTOL PORT RAILWAY & PIER CO. MESSRS NELSON & BEALE'S STATEMENT RE UNCOMPLETED CONVEYANCES BRISTOL PORT & PIER RAILWAY & PIER CO. PHILIP NAPIER & ORS.



Scale, 2 Chains to an Inch.



COUNTY OF GLOUCESTER

CITY & COUNTY BOROUGH OF BRISTOL

( FORMERLY PARISH OF WESTBURY—UPON—TRYM )

P O R T R A I L W A Y & P I E R C O

M E S S R S N E L S O N & R E A L E S S T A T E M E N T R E U N C O M P L E T E D C O N V E Y A N C E S B R I S T O L P O R T & P I E R R A I L W A Y

INCH COTTAGE GROVE LANE, SHIREHAMPTON  
C.R. 963. Sold w.e.f. 24.6. Mr. G.A. FOWLES.  
£3,500.

Drains, water-pipes, electric wires, &c. over & under line  
See Military authorities L.A. 3865  
14.

Messrs Humphreys' exptl. to use L.C.  
for War Office contract, also gate in fence  
See L.A. 1351/16 papers, (San. Man. 8/11/16)

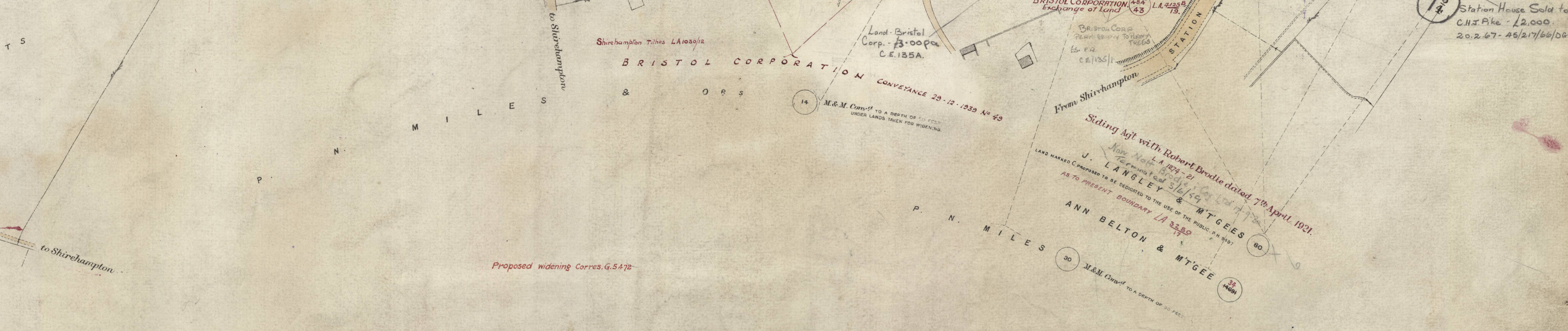
DUNNISON LAND (1864-7)  
£500 w.e.f. 25.10.75  
FILE NO. 931/26  
NON RESIDE  
TO MESSRS J. LANGLEY  
L.A. 2150 on 21.11.18  
4871 done & rec'd.

Bristol Corp. Sale of land & Grant EAC  
of farm-enclosure Deed No. 81131 Misc

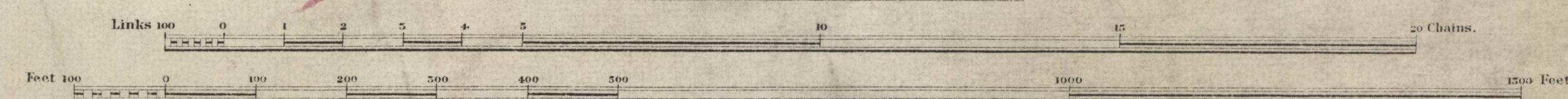
Cable - Bristol Rediffusion  
Supplies Ltd. 1910  
C.E. 169/2

CERTIFICATE OF MAGISTRATES  
BRISTOL GAS CO  
R. PUGH & ORS

M E S S R S N E L S O N & R E A L E S  
T H E



Scale, 2 Chains to an Inch.



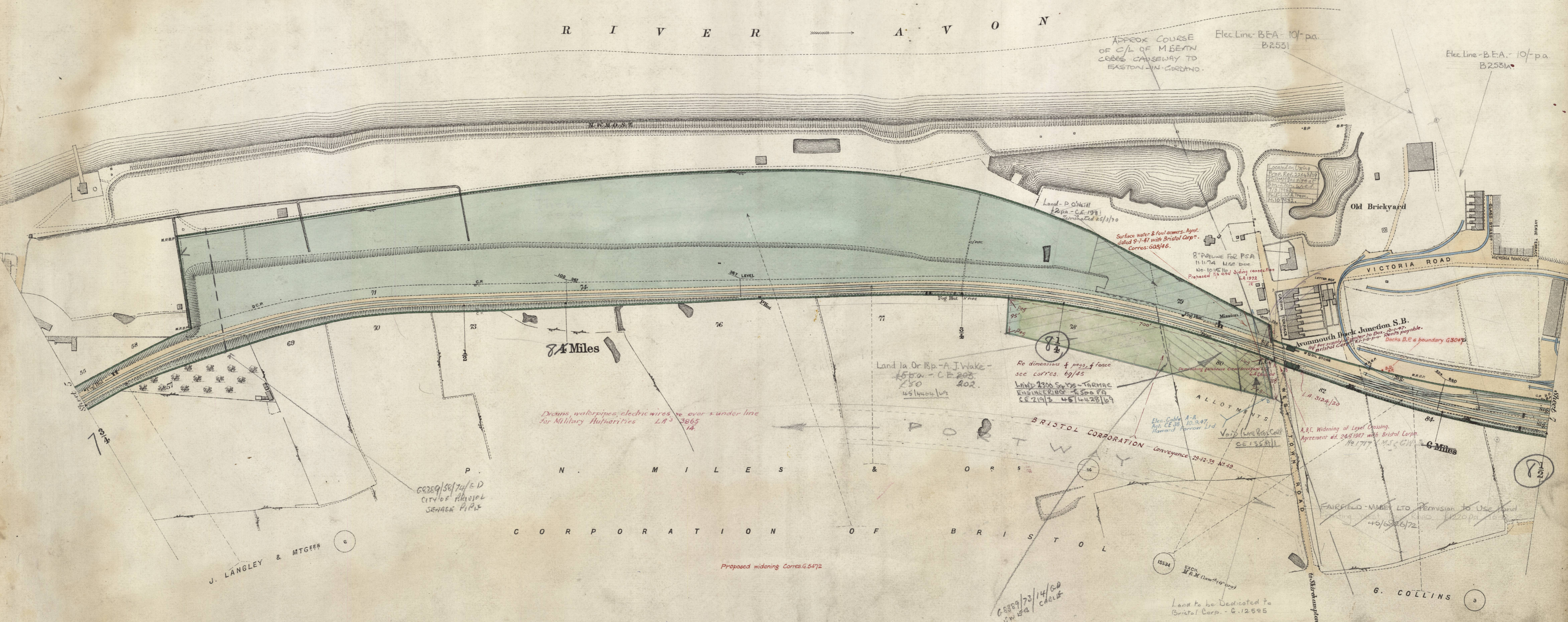
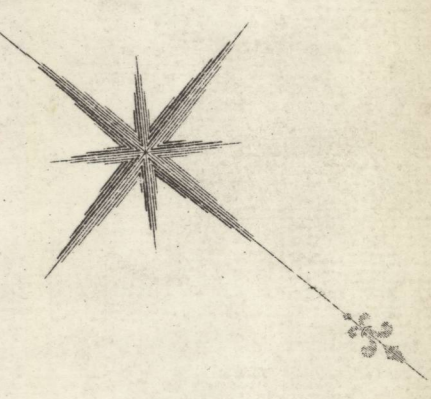
COUNTY OF GLOUCESTER

CITY & COUNTY BOROUGH OF BRISTOL

FORMERLY PARISH OF WESTBURY UPON TRYM)

THE BRISTOL PORT RAILWAY & PIER CO.
MESSRS NELSON & BEALE'S STATEMENT RE UNCOMPLETED CONVEYANCES BRISTOL PORT & PIER RAILWAY

RIVER AVON



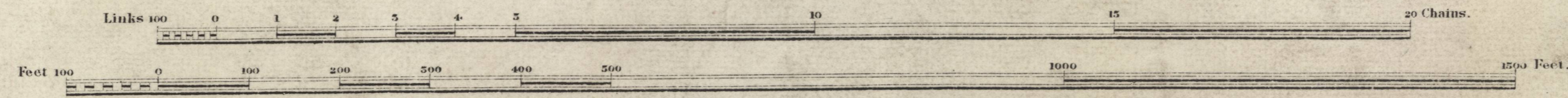
8 1/4 Miles

6 Miles

P. N. M. I. L. E. S. & O. R. S.

C O R P O R A T I O N O F B R I S T O L

Scale, 2 Chains to an Inch.



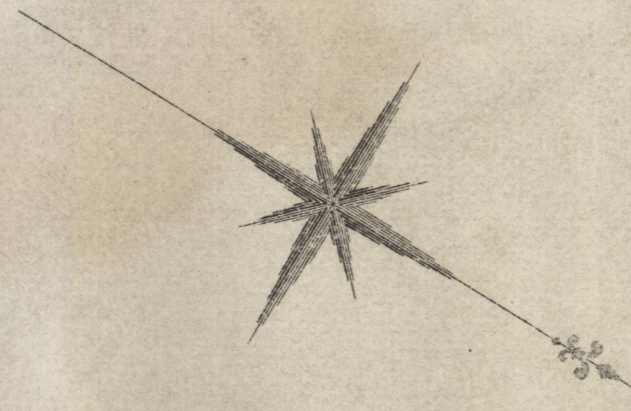
J. LANGLEY & MTGEES

Estate Agents Office, Midland Railway Derby.

COUNTY OF GLOUCESTER

CITY & COUNTY BOROUGH OF BRISTOL

( FORMERLY PARISH OF WESTBURY UPON TRYM )



Agreed Boundary A to B. P.H. 5961

CORPORATION OF BRISTOL

A.J.F. LTD. - LAND FOR PARKING AND STEEL STORAGE - £210 pa - 107m<sup>2</sup> (27.5v) W.E.F. 1/9/75 AGREEMENT NO. 39/90

Anglo-American Oil Depot

Tanks

Tanks

AVONMOUTH DOCK STATION 104

AVONMOUTH DOCK STATION (G.W.)

Application to erect Restaurant L.A. 221  
English & Foreign Sailors Socy Application L.A. 1443  
Land, Seamen & Boatmen's Friend Society L.A. 1461  
Application to erect office L.A. 1837/18

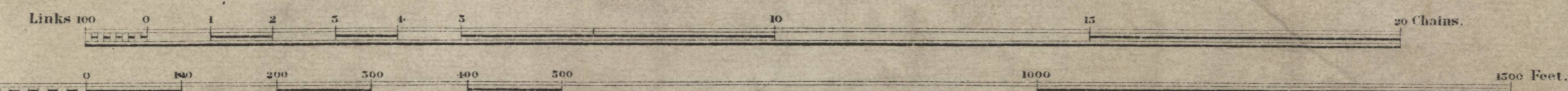
5 Miles

Tenancy of this land see L.A. 1392 & 1359  
Applications to lease L.A. 1392A, 1392B, 1392C, 1392D  
Advertisement Hearing L.A. 1392

Former Booking Office £135 pa  
J. Gwynne - £2520-45/4039/88

Application re Window see L.A. 3185  
Gloucester Rd. Holbrow & Oaten's applic<sup>n</sup> L.A. 332  
& Beales Co opinion re Deed covenants 13/21

Scale, 2 Chains to an Inch.



Estate Agents Office  
Midland Railway  
Derby

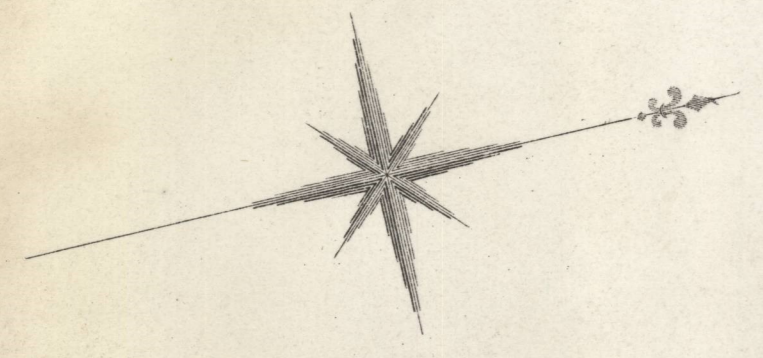


COUNTY OF GLOUCESTER

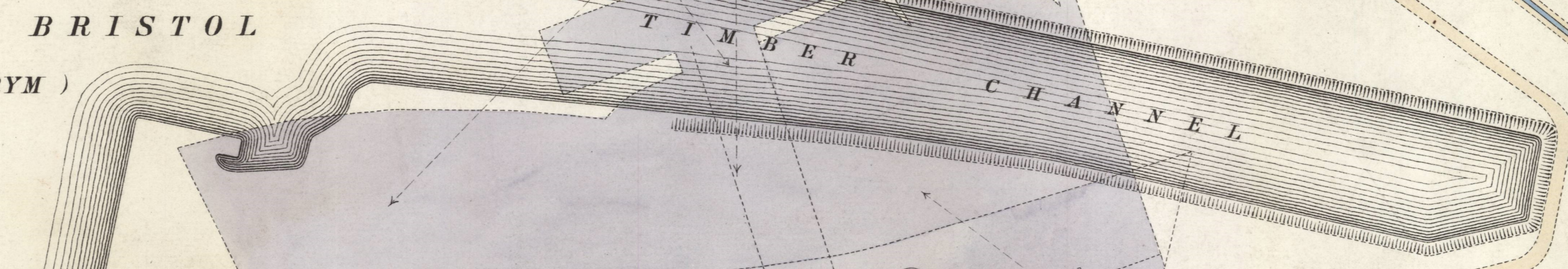
CITY & COUNTY BOROUGH OF BRISTOL  
(FORMERLY PARISH OF WESTBURY-UPON-TRYM)

DUKE OF BEAUFORT, MIDLAND & G.W.R. CO'S (Jointly)  
GREAT WESTERN RLY CO & CORPORATION OF BRISTOL

HON. C. A. GORE, A COMMISSIONER OF  
H. M. WOODS, FORESTS & LAND REVENUES



ROYAL EDWARD DOCK



G R E A T W E S T E R N R L Y C O

N. P. M I L E S & O R S

C O R P O R A T I O N O F B R I S T O L

B R I S T O L C O R P O R A T I O N , G R E A T W E S T E R N R L Y C O , M I D L A N D R L Y C O

P. N. M I L E S & O R S

G R A N O F Y

F L O U R M I L L

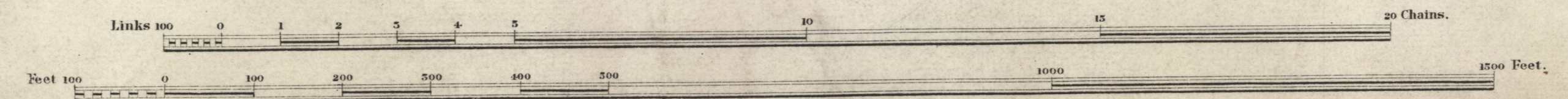
16 Miles

St. Andrew's Junction

G. COLLINS & AN<sup>rs</sup>  
W. H. HARFORD & AN<sup>rs</sup>

Line of Ulg cables  
SWG 1/2 Gpa B.2533/1

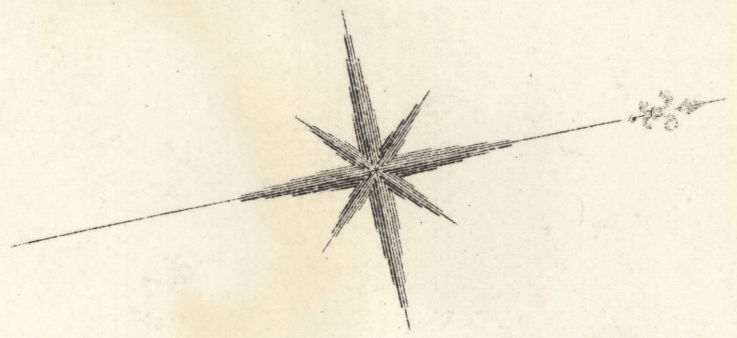
Scale, 2 Chains to an Inch.



COUNTY OF GLOUCESTER

CITY & COUNTY BOROUGH OF BRISTOL

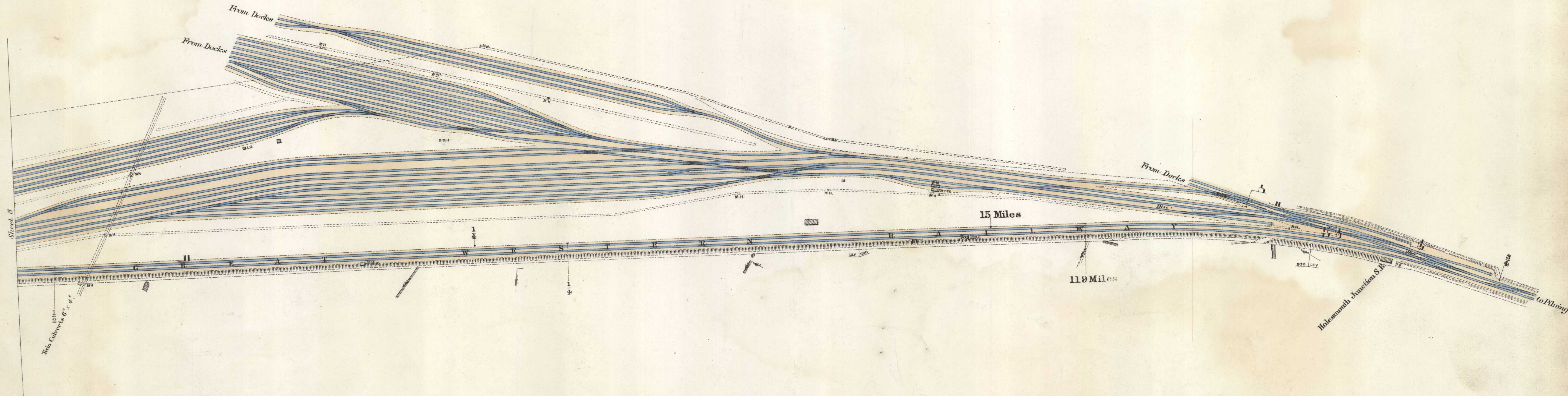
(FORMERLY PARISH OF WESTBURY UPON TRYM)



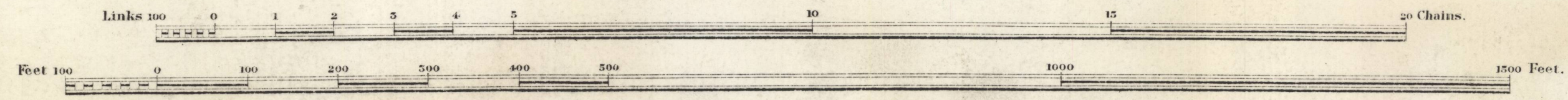
BRISTOL

CORPORATION GREAT WESTERN RLY. CO. MIDLAND RLY. CO.

1890 2/4 RE SIDINGS



Scale, 2 Chains to an Inch.



Estate Agents Office, Midland Railway, Derby.